

BEST HILLS MEADOWS SUBDIVISION

NOTE:
CHIP/FOG SEAL: 31,180 SY

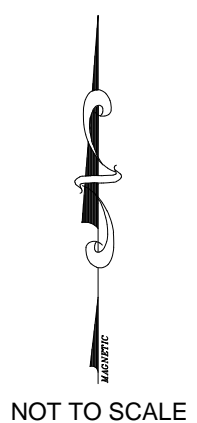
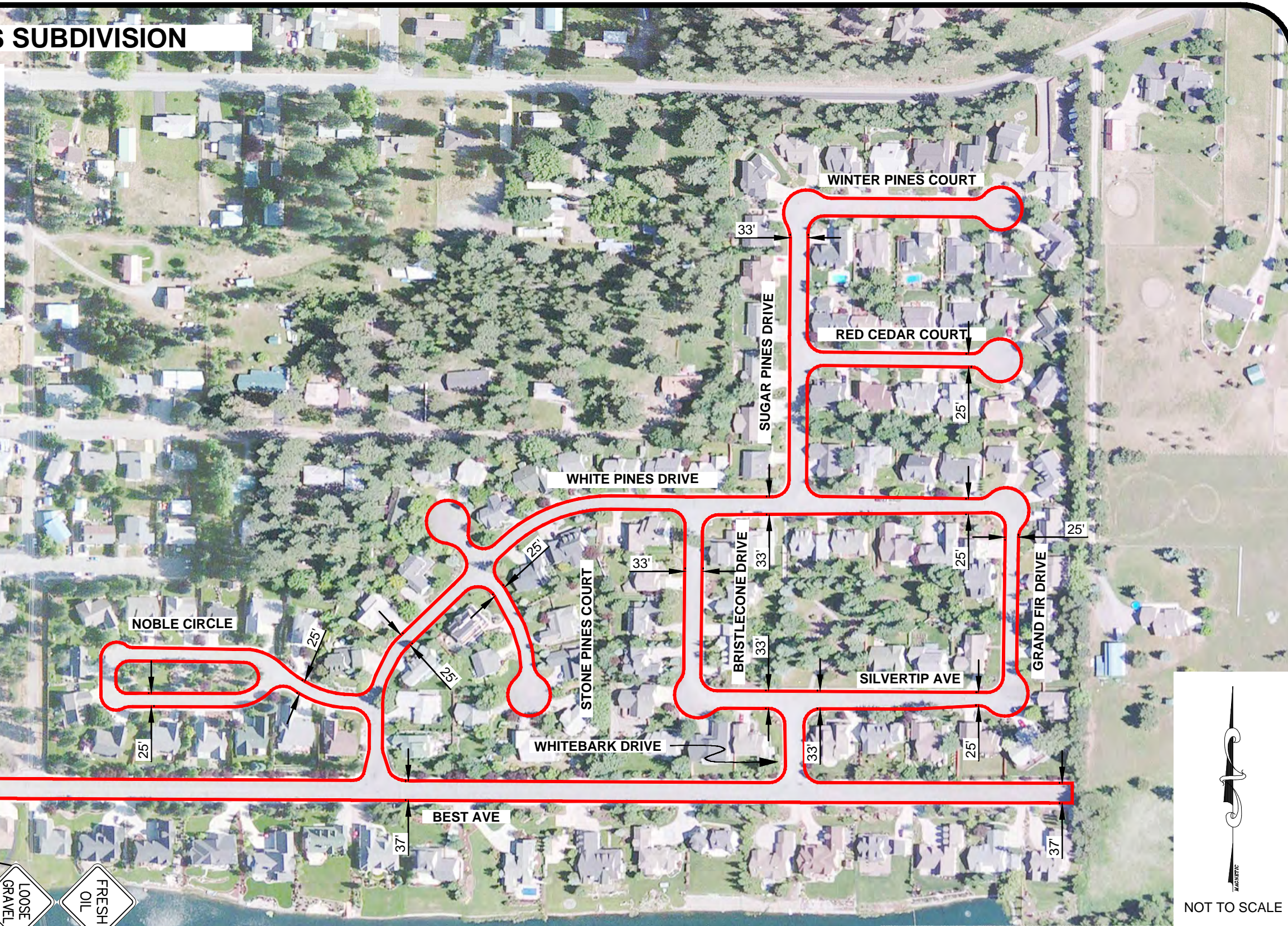
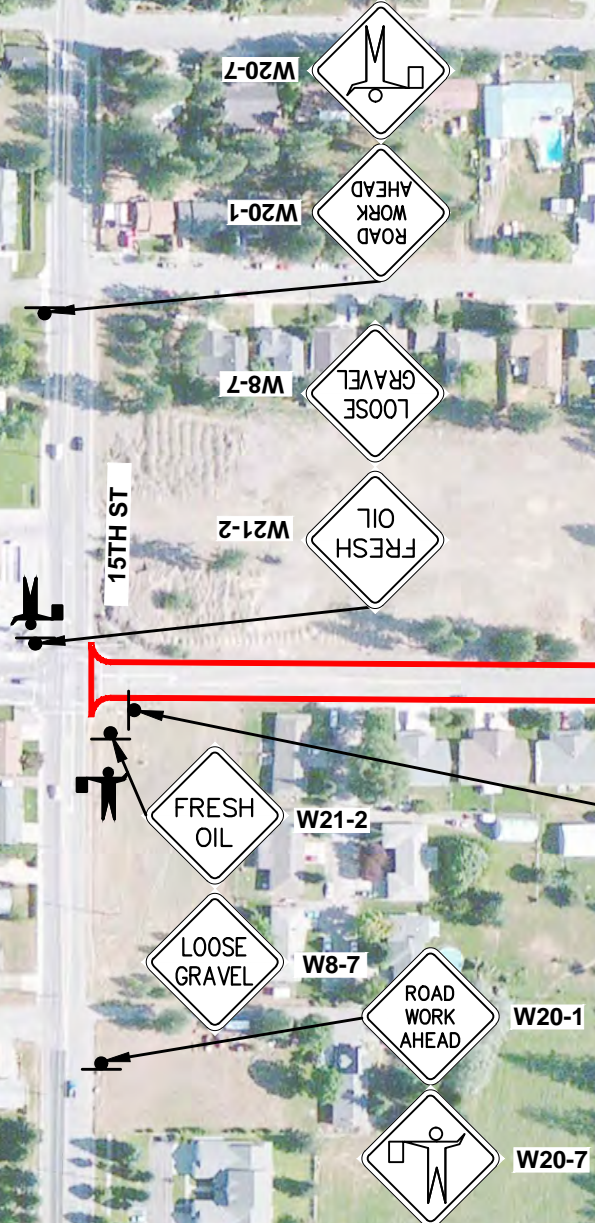


R8-3

NO PARKING SIGNS TO BE PLACED 3 PER BLOCK PER SIDE OF ROAD



TO BE PLACED AT ALL SUBDIVISION ENTRANCES



CITY OF COEUR D'ALENE
2017 ROAD PRESERVATION PROJECT



www.welchcomer.com
208-664-9382
877-815-5672 (toll free)
208-664-5946 (fax)
350 E. Kathleen Ave.
Coeur d'Alene, ID 83815

41200DS04.DWG 12-20-2016