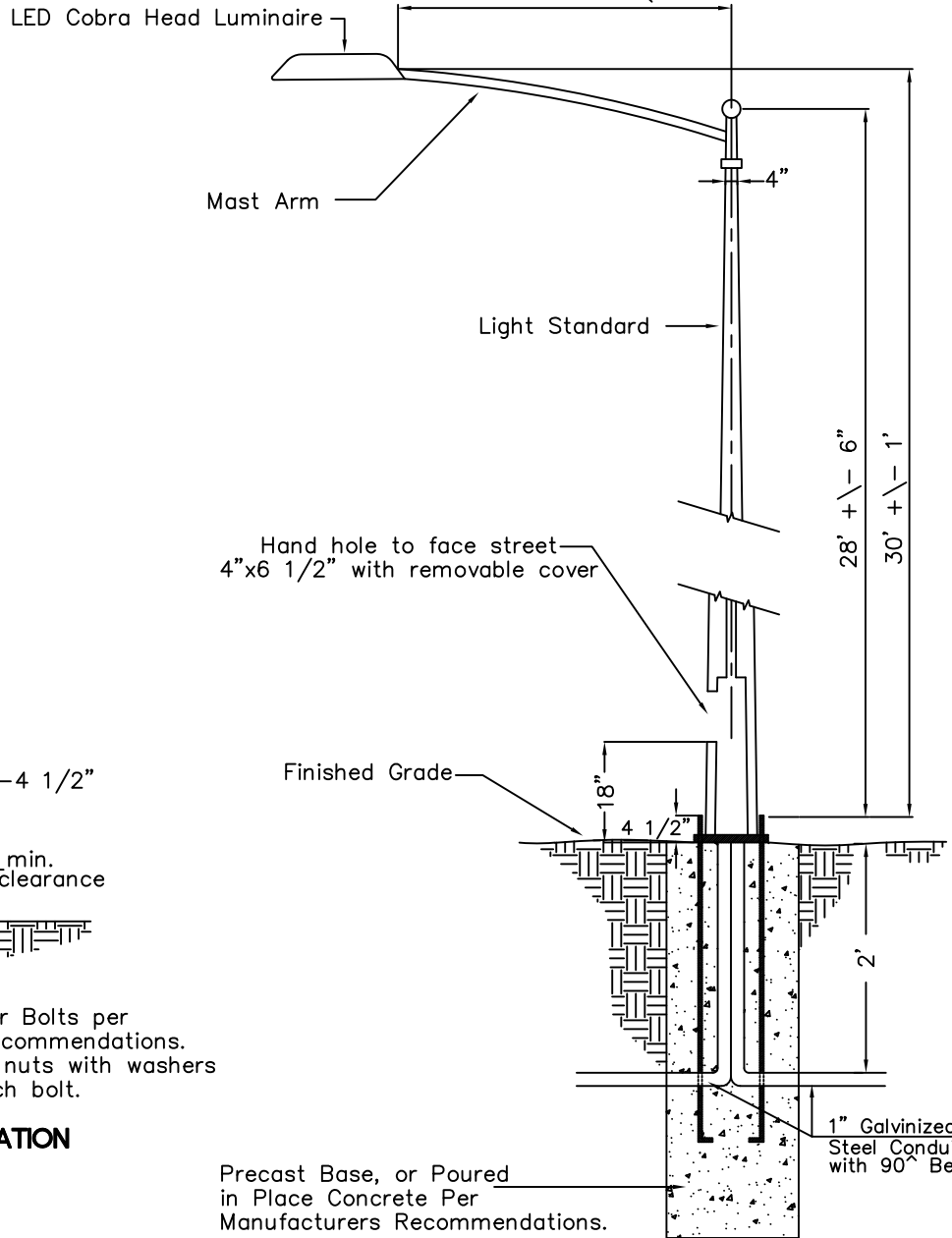
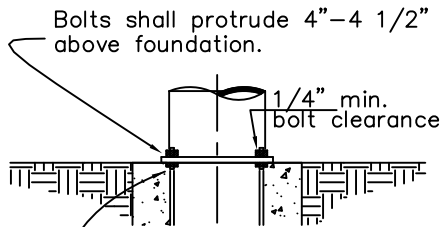


Mast Arm length 6' - 12'
Curb Overhang 6" min - 7.5' max



| APPLICATION | LUMENS |
|-------------|--------|
| Residential | 9,500 |
| Collectors | 22,000 |
| Arterials | 50,000 |



ANCHOR BASE FOUNDATION
N.T.S.

Galvanized Anchor Bolts per Manufacturers Recommendations.
Use Two leveling nuts with washers (all Galv.) on each bolt.

- Notes:
1. See Standard Drawing M-15 for Street Lighting Notes.
 2. Luminaire type to be approved by the City Engineer.



CITY OF COEUR D'ALENE STANDARD DRAWING

**PEDESTAL MOUNT
LIGHT STANDARD**

APPROVED BY:

Chris Bosley
CITY ENGINEER, PE 10804

10/1/24
DATE:

DWG NO.

M-13