



In The News

Message from Mayor Woody McEvers

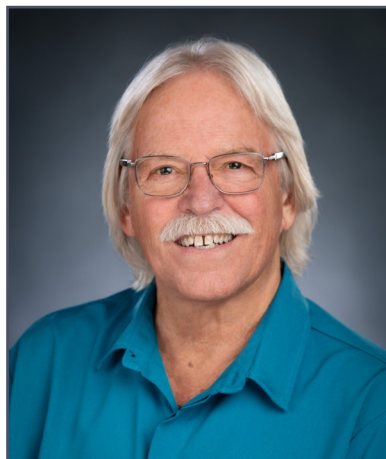
Did not see this coming...

Thank you, City Council, for the trust and confidence you have given me, along with the community that has reached out in support.

I am so grateful for all the years that have made me appreciate all the folks that have made our community great.

I encourage our citizens to stay connected to us through the City website, social media channels, and community events.

I am committed to better communication and making our City more accessible to our citizens.



- Mayor Woody McEvers

MAYOR AND CITY COUNCIL

Mayor

Woody McEvers 208.691.5303

City Council

Dan English 208.819.0940

Amy Evans 208.819.1349

Dan Gookin 208.667.5200

Kiki Miller 208.661.1778

Christie Wood 208.819.5274

CITY DEPARTMENTS

Main Line 208.769.2300

Building Services 208.769.2267

Engineering 208.769.2235

Finance/Utilities 208.769.2227

Fire 208.769.2340

Human Resources 208.769.2205

Legal 208.769.2348

Library 208.769.2315

Municipal Services 208.769.2300

Parks 208.769.2252

Planning 208.769.2274

Police 208.769.2320

Recreation 208.769.2250

Streets 208.769.2235

Wastewater 208.769.2281

Water 208.769.2210



**FIREFIGHTER TECH
TRAINING FOR
ENTRAPMENT
SCENARIOS**

The Tech Rescue Team recently spent time training on the rescue of victims from complicated entrapment scenarios. As shown below, they must act quickly to put together a plan and utilize multiple tools to ensure a swift rescue.



Wheelchair Awareness

On Friday, August 16, 2024, the Coeur d’Alene Pedestrian & Bicycle Committee held a wheelchair awareness event downtown. 25 people participated and learned firsthand the struggles someone in a wheelchair faces on a daily basis when navigating downtown sidewalks. Among those invited to participate were City Council members, Code Enforcement, the Planning Department, the City Engineer, the Downtown Association, downtown shop owners, and the general public. The Committee felt it was important for local lawmakers and others to see accessibility issues that need to be addressed. Several people confined to wheelchairs led each of the three groups around the downtown area, pointing out issues they experience when navigating the area.



The goal is an accessible city for everyone.

Each wheelchair participant was given a list of items to take notice of, such as missing tree grates, broken sidewalks, and poorly placed A-Frame signs. Also, while in the wheelchairs, participants were asked to attempt tasks like opening doors on their own, rolling up a steep incline, rolling up and down a curb ramp, or just rolling into a handicapped restroom (not all restrooms are created equally)—all eye-opening undertakings for someone who is not confined to a wheelchair. City employees took notes on immediate issues they could fix, such as relocating sidewalk furniture to make more space, fixing missing tree grates and sidewalks to be repaired.



The goal of the event was to raise awareness and to alert lawmakers and code enforcers to the small changes that can be made for easier accessibility for everyone regardless of disability. The goal is to have an accessible city for everyone!

Electric Bike and Trail Use Regulations

The City of Coeur d'Alene is committed to ensuring that our trails and parks are safe and enjoyable for all users. With the increasing popularity of electric bicycles (e-bikes), the City has received numerous inquiries about their use on city trails. This article aims to address these questions by providing clear guidelines, which align with state regulations.

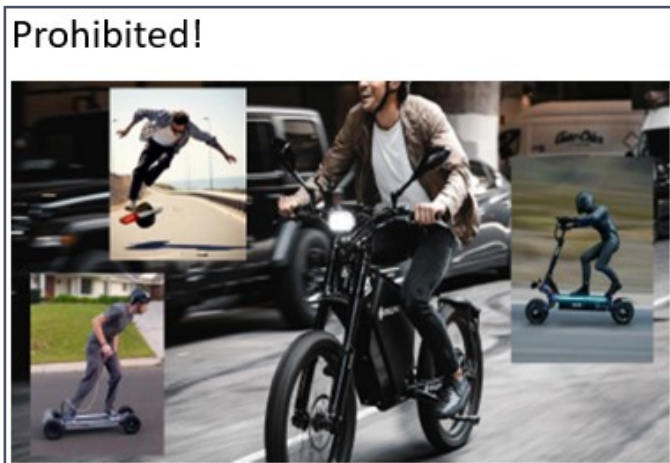
Electric bikes are an amazing innovation, allowing people who may not normally be able to ride conventional bicycles the opportunity to enjoy the outdoors. However, there are valid concerns regarding the speed at which e-bikes travel and the potential danger they pose to other trail users. The State of Idaho has ruled on the types of e-bikes allowed on trails and those which are not and the City of Coeur d'Alene has opted to follow the state's ruling for trail use. In summary, **e-bikes are allowed on all trails where conventional bikes are allowed as long as they have pedals. Furthermore, they must not be operated faster than 15 miles per hour.**

There are different classes of e-bikes with different speed capabilities, but regardless of what type of e-bike you may have, the underlying issue is people going too fast and endangering others. E-bikes, and other e-equipment, give people the ability to easily exceed the 15 mph speed limit on trails where other people are walking, pushing children in strollers, walking dogs, running, and otherwise recreating. Riding too fast when other travelers are present is dangerous. Most e-bikes are able to go faster than the posted 15 mph, which is the speed limit for all trail users. Speeding endangers others and speeders can be held liable for injuring other trail users. There are some concerned community members who would like to prohibit e-bikes, so please be a good neighbor and ride your e-bikes responsibly to ensure the continued use of e-bikes on city trails.



E-bikes are allowed on all trails where conventional bikes are allowed as long as they have pedals, but they must not be operated faster than 15 miles per hour.

The city has also observed the use of other electric equipment such as e-motorcycles (Surrans), e-scooters, e-mopeds, one wheeled skateboards, e-skateboards, etc., and it is important to note that these devices are NOT allowed on trails or in City parks. *Continued, page 5*



**THIS MONTH'S
EVENTS AT THE
LIBRARY**

Career Coaching

Ages 14+
September 4
9:00 am - 4:00 pm

Tai Chi and Qi Gong

Tuesdays
10:00 am

Lawyer in the Library

1st Thursday of the Month
4:00 pm - 6:00 pm

Yoga for You

Mondays
9:30 am

Ukelele Club

Every Second Saturday
3:00pm - 4:45 pm

For more information on any
Library event, call
(208) 769-2315, or
visit the Library's
[event calendar](#).



**Floral Impressions: Crafting Nature's
Patterns on Canvas Totes**



Join the Library on Saturday, September 7 from 1:00 pm - 3:00 pm for a fun-filled afternoon exploring the unique art of flower pounding. Tataki-Zomé is the ancient Japanese art of dyeing by hammering flowers and plants onto fabric or paper. Design your tote bag using an assortment of fresh flowers and leaves, then, use

hammers to transfer the natural pigments onto the fabric for a bag unique to you! Meet in the Community Room and the group may move outside, weather permitting. Please feel free to bring any fresh flowers or greenery you would like to use or share!

This event is intended for patrons ages 14 and older and the content is designed for an audience of that age.

North Idaho Job and Resource Fair

Join the Library on September 24 from 1:00 pm - 4:00 pm for North Idaho's Job and Resource Fair. Step into a world of opportunities where top employers are eager to meet you, and dive into many workforce resources while enjoying complimentary pastries and coffee. Receive on-the-spot resume assistance and win fun prizes. Bring your resume and come ready to land your dream job.



Craft Supply Swap

Got a storage closet brimming with old craft materials? Changed your mind about embroidery? That yarn not as appealing as it was a decade ago? Join us for a craft swap on October 5 from 10:00 am - 2:00 pm.

For more details on the event and on how you can donate craft supplies for the event, click [here](#).

Electric Bike and Trail Use Regulations, cont.

The Department of Justice has ruled that people with mobility related disabilities are allowed to use their motorized wheelchairs and wheeled mobility scooters on trails and sidewalks. All trail users must obey the posted speed limit.

The Idaho Panhandle National Forest on Canfield Mountain offers designated trails for off-road e-vehicles, including motorcycles. Bike lanes on City streets also allow e-bikes, including e-motorcycles (provided that they are licensed, registered, and you have a driver's license or are accompanied by an adult). In bike lanes, all users must follow the posted speed limit for vehicular traffic. So, if you find the trail speed limit too slow, use a bike lane. A word of caution, riding anything other than your feet on a sidewalk is dangerous. Many cities ban bikes from sidewalks because they are seven times more likely to get hit by a car than in the street. Sidewalks are behind the line of sight of most drivers, and they are not looking for bikes when trying to merge with traffic or entering a driveway. The faster you go, the more dangerous it becomes, so riding your e-equipment on sidewalks is a bad idea.

It is also crucial to remember that bikes of any kind, including pedal bikes, are prohibited on Tubbs Hill or in the Fernan Natural Park to preserve these areas for hikers. The Canfield Natural Park/Cancourse is the only natural park in Coeur d'Alene where both bikes and e-bikes are allowed, though e-motorcycles are not permitted.

To report violations, please call the Police Department's non-emergency line at 208-769-2320. The Parks Department is not an enforcement agency and cannot enforce City code. Should you have further questions or concerns regarding these issues, please contact the City of Coeur d'Alene Trails office at 208-292-5766 or via email at mmccully@cdaid.org



CITY COUNCIL AND COMMISSION MEETING INFORMATION

City Council Meetings
1st and 3rd Tuesday each month
6:00 pm
Library Community Room
[Council Agenda Packets](#)

Ped/Bike Committee
1st Wednesday each month
4:00 pm
City Hall

CDA TV Committee
2nd Monday each month
8:00 am
City Hall

Parking Commission
2nd Tuesday each month
3:00 pm
City Hall

Planning Commission
2nd Tuesday each month
5:30 pm
Library Community Room

Urban Forestry Committee
3rd Friday each month
8:00 am
City Hall

Park and Rec Commission
Monday before 3rd Tuesday
5:30 pm
Library Community Room

Childcare Commission
4th Monday each month
6:30 pm
City Hall

Arts Commission
2nd Tuesday in September
4:00 pm
City Hall

Continued, next page

**CITY COUNCIL AND
COMMISSION
MEETING
INFORMATION,
CONT.**

**Historic Preservation
Commission**

4th Wednesday each month
12:00 pm
City Hall

Library Board Meeting

4th Wednesday each month
4:00 pm
Library Community Room

For more information, please
visit the [Calendar page](#) on the
City of Coeur d'Alene's website.

Find the City on Facebook!

[City of Coeur d'Alene](#)

[Coeur d'Alene Fire Department](#)

[Coeur d'Alene Police Department](#)

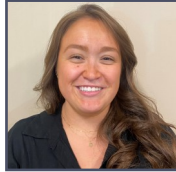
[Coeur d'Alene Parks and Rec
Department](#)



Welcome New Employees!

A warm welcome to the following new City employees. The City is privileged to have these talented individuals join as new team members.

Julia Gallegos
Legal Assistant
Legal Department



Jeremy Amick
Collection Operator
Wastewater Department



The City of Coeur d'Alene is Hiring!

Visit the City's employment website if you are interested in working for the City of Coeur d'Alene. Up-to-date job postings are listed [here](#).



Fire Department Open House

The Fire Department's Annual Open House is coming up on Saturday, September 14th, from 11:00 am - 2:00 pm. This is a family friendly event that includes a Firefighter Combat Challenge for the kids, fire extinguisher demos, a Life Flight demonstration, fire apparatus, and much more. Free hot dogs and drinks! Hope to see you at Fire Station 3, located at 1500 N. 15th St.



volunteers

needed!



City of Coeur d'Alene

Become a Student Representative on one of the
City's boards, commissions or committees.

you can serve on the

- Library Board
- Arts Commission
- Childcare Commission
- Parks & Rec Commission
- Pedestrian and Bicycle Committee
- Urban Forestry Committee
- Parking Commission
- CDATV Committee

volunteer requirements

- Between the ages of 14 and 18
- High school student attending school within the boundaries of School District 271
- Submit an application and letter of recommendation NO LATER THAN September 27, 2024. Visit www.cdaid.org/volunteer for an application form.

get in touch

www.cdaid.org/volunteer | jmateski@cdaid.org | 208-666-5754

CITY OF CDA PARKS AND RECREATION

2024 3RD-8TH GRADE

YOUTH BASKETBALL

3RD - 5TH GRADE REGISTRATION : OCTOBER 1ST - OCTOBER 14TH

6TH - 8TH GRADE REGISTRATION: OCTOBER 14TH - OCTOBER 26TH

- GAMES ARE PLAYED MONDAY - THURSDAY EVENINGS AND SATURDAY MORNINGS AT LOCAL SCHOOL DISTRICT GYMS
- PRACTICES BEGIN LAST WEEK OF OCTOBER WITH GAMES BEGINNING MIDDLE OF NOVEMBER AND ENDING BEFORE CHRISTMAS BREAK

\$40 : CITY RESIDENTS
\$45 : NON-RESIDENTS

REGISTER ONLINE AT
TEAMSIDELINE.COM/CDAID