

**KEY NOTES**

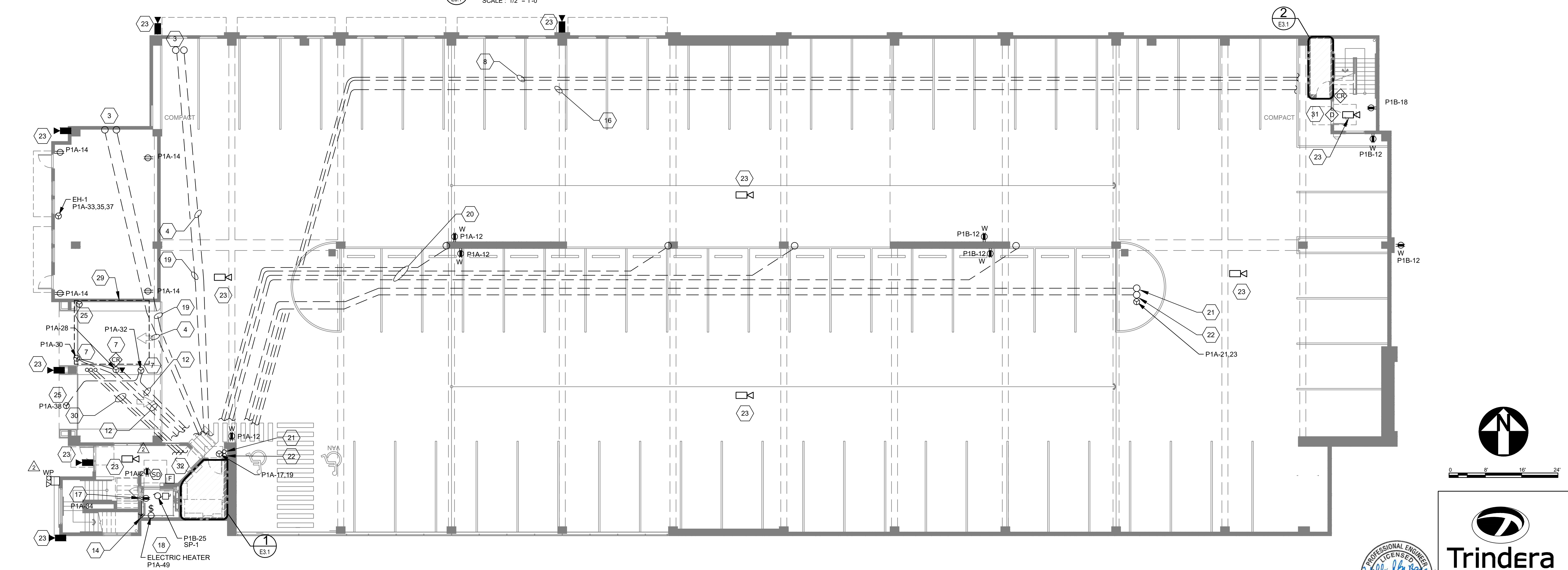
- 1 MOTOR CONTROLLER DISCONNECT INTEGRAL TO ELEVATOR CONTROLLER.
- 2 CAB LIGHT DISCONNECT INTEGRAL TO ELEVATOR CONTROLLER.
- 3 STUB, CAP, AND LABEL 'FUTURE TENANT'
- 4 PROVIDE (1)3" CONDUIT TO STUB UP WITHIN MDP.
- 5 COORDINATE LOCATION OF EQUIPMENT WITH FINAL ELEVATOR SPECIFICATION. COORDINATE WITH MANUFACTURER'S REQUIREMENTS. AS PART OF A MACHINE ROOMLESS ELEVATOR. COORDINATE WITH ARCHITECTURE AND WITH MANUFACTURER'S REQUIREMENTS. REFERENCE DETAIL 5 ON SHEET E4.3
- 6 EQUIPMENT BY OTHERS.
- 7 RFID SYSTEM PER CITY REQUIREMENTS. COORDINATE FINAL POWER REQUIREMENTS WITH VENDOR CHOSEN BY CITY. COORDINATE PATHWAY WITH GENERAL CONTRACTOR. COORDINATE FINAL LOCATION WITH ARCHITECT PRIOR TO INSTALLATION.
- 8 PROVIDE (3) 3"C WITH PULL STRING FROM STORAGE ROOM TO MECHANICAL ROOM. AND STUB-UP INTO ROOM.
- 9 CONTINUE PATHWAY TO STUB-UP IN FUTURE TENANT AREAS INDICATED ON PLANS.
- 10 CONTINUE PATHWAY TO GATE CONTROLLER AS INDICATED ON PLANS.
- 11 CONTINUE PATHWAY TO STORAGE ROOM AS INDICATED ON PLANS.
- 12 (1)2" CONDUIT.
- 13 PROVIDE 120/208V 2KVA INVERTER WITH OUTPUT BREAKERS AS REQUIRED. REFERENCE ONE LINE DIAGRAM AND INVERTER PANEL SCHEDULE FOR MORE INFORMATION. MYERS POWER PRODUCTS EM-3 SERIES OR APPROVED EQUIVALENT.
- 14 PROVIDE (2)2" CONDUITS FROM ELEVATOR CONTROLLER TO TOP OF HOISTWAY TO ELEVATOR MOTOR. COORDINATE FINAL ROUTING AND LOCATIONS WITH ELEVATOR VENDOR.
- 15 PROVIDE 19" 2-POST RACK X 84" HIGH. CHATSWORTH UNIVERSAL 19"W SERIES OR APPROVED EQUAL
- 16 REFERENCE ONE-LINE DIAGRAM FOR FEEDER TO PANEL MDP.
- 17 PROVIDE AND INSTALL 8' X 4' X 3/4" FIRE RATED PLYWOOD WITH BOTTOM AT 18" AFF. PAINT WHITE. EXPOSE ONE SMALL PORTION OF PLYWOOD INDICATING FIRE RATING FOR INSPECTIONS.
- 18 PROVIDE WALL MOUNTED 1KW WALL MOUNT UNIT HEATER FOR ELEVATOR PIT. INDECO WLI SERIES OR APPROVED EQUAL.
- 19 PROVIDE (3) 2" CONDUIT BACK TO IT RACK IN MECHANICAL ROOM.
- 20 PROVIDE (4)2" CONDUITS FROM P1A TO LOCATIONS SHOWN. STUB 6" AFF. CAP AND LABEL FOR FUTURE EV STATIONS. SECURE PULL STRINGS APPROPRIATELY FOR FUTURE USE.
- 21 OFCI PARKING TICKET KIOSK. PROVIDE (1) 1" CONDUIT WITH (2)1/10 AND (1)1/10 FOR POWER PER CIRCUIT DESIGNATION. COORDINATE WITH FINAL POWER REQUIREMENTS OF EQUIPMENT SELECTED PRIOR TO INSTALLATION. COORDINATE FINAL LOCATION OF EQUIPMENT WITH ARCHITECT.
- 22 OFCI PARKING TICKET KIOSK. PROVIDE (1) 1" CONDUIT WITH PULL STRING BACK TO IT RACK.
- 23 OFCI SURVEILLANCE CAMERA. BASIS OF DESIGN IS POE. PROVIDE (1) 1" CONDUIT BACK TO IT CABINET IN MAIN ELECTRICAL ROOM. COORDINATE FINAL LOCATIONS WITH CITY PRIOR TO INSTALLATION.
- 24 CONDUITS TO PARKING KIOSK, REFERENCE E3.1.
- 25 DOOR OPENER PHOTO-EYES INSTALLED PER THE MANUFACTURER'S RECOMMENDATION. TYPICALLY 12"-18" AFF. CONDUIT AND WIRE ROUTING TO BE DETERMINED IN FIELD AND COORDINATED WITH OTHER TRADES.
- 26 PROVIDE (1) 4" CONDUIT FOR CHARTER AND (1) CONDUIT FOR FRONTIER FROM THE MAIN ELECTRICAL ROOM TO UTILITY HAND-HOLE AS SHOWN. REFERENCE E1.1 FOR CONTINUATION.
- 27 PROVIDE (1) 2" WITH PULL STRING FOR COMMUNICATIONS FROM ELECTRICAL ROOM TO EXISTING CDA FIBER VAULT. COORDINATE EXACT LOCATION AND INSTALLATION WITH CITY PRIOR TO INSTALLATION. REFERENCE E1.1 FOR CONTINUATION.
- 28 PROVIDE 24" WALL MOUNTED LADDER RACK FOR CABLE MANAGEMENT FROM 12" AFF OR EQUIPMENT RACK TO 6" BELOW VERTICAL CONDUIT SLEEVE. TYPICAL FOR ALL STORAGE/UTILITY ROOMS WITH VERTICAL SLEEVES AS SHOWN.
- 29 INDUCTION LOOP PER RFID SYSTEM. COORDINATE FINAL REQUIREMENTS WITH CITY CHOSEN VENDOR.
- 30 PROVIDE (3) 2" CONDUIT WITH PULL STRINGS BACK TO MECHANICAL ROOM FOR FUTURE GATES. STUB, CAP AND LABEL FOR 'FUTURE GATES'
- 31 PROVIDE BRIVO ALLIED CONTROL SYSTEM AS SELECTED BY OWNER. COORDINATE FINAL POWER REQUIREMENTS FOR CHOSEN VENDOR.
- 32 PROVIDE PROTECTIVE COVER.

**SHEET NOTES**

1. SEE ARCHITECTURAL PLANS, SECTIONS AND ELEVATIONS FOR EXACT EQUIPMENT AND DEVICE LOCATIONS.
2. SEE ARCHITECTURAL PLANS FOR LOCATIONS OF SOUND, SMOKE AND FIRE RATED WALLS.
3. COORDINATE ALL INSLAB CONDUITS AND ROUTING WITH STRUCTURAL CONTRACTOR PRIOR TO INSTALLATION
4. COORDINATE CEILING MOUNTED DEVICES WITH ARCHITECTURAL AND REFLECTED CEILING PLANS.

**ENLARGED MECHANICAL LEVEL 1**  
SCALE : 1/2" = 1'-0"

**ENLARGED STORAGE LEVEL 1**  
SCALE : 1/2" = 1'-0"

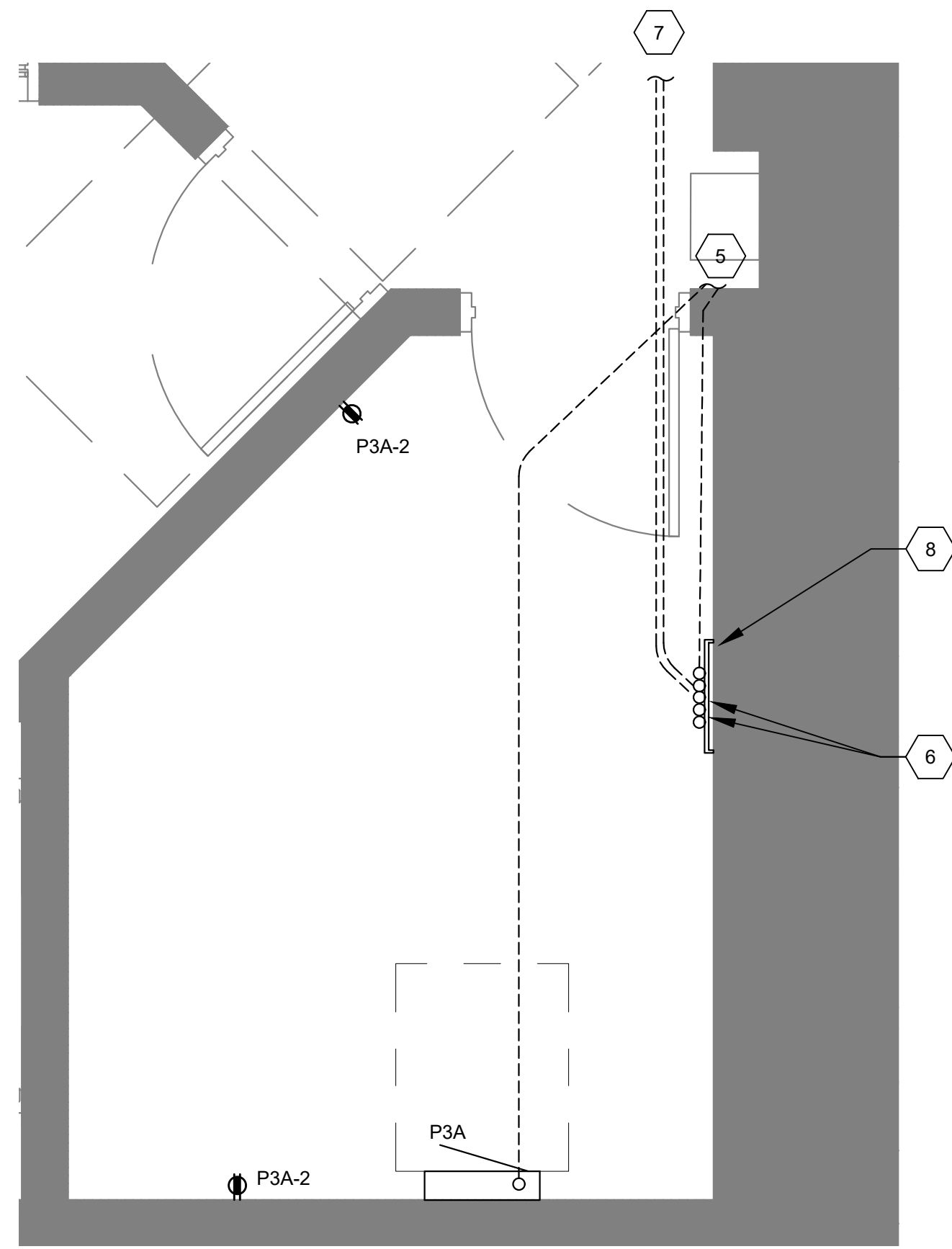


**POWER PLAN - LEVEL 1**  
SCALE : 3/32" = 1'-0"

**MILLER STAUFFER ARCHITECTS**  
 LICENSED ARCHITECT RICHARD M. STAUFFER  
 AR-1376 STATE OF IDAHO 11-08-17  
 POWER PLAN - LEVEL 1  
 PERMIT SET  
 11-08-17  
 DT PARKING STRUCTURE  
 214 N 3RD ST.  
 COEUR D'ALENE, IDAHO  
 PROJECT NO.: 1714  
 DESIGNED BY: MWM  
 DRAWN BY: CL  
 SHEET NO.: E3.1  
 REV. DATE DESCRIPTION  
 01/25/2017 PERMIT SET  
 9/1/17 BID SET  
 11/17/2017 PERMIT SET  
 1875 N. LAKEWOOD DRIVE #201  
 COEUR D'ALENE, IDAHO 83814  
 (209) 676-8001 (209) 676-0100  
**Trindera ENGINEERING**  
 PROFESSIONAL ENGINEER  
 LICENSED  
 16893  
 09/18/17  
 STATE OF IDAHO  
 WALKER JOHN BECK

Thursday, August 24, 2017 10:41:17 AM C:\Users\mstauffer\OneDrive\Projects\2017\1714\1714 CDA Parking Garage\01 Cld

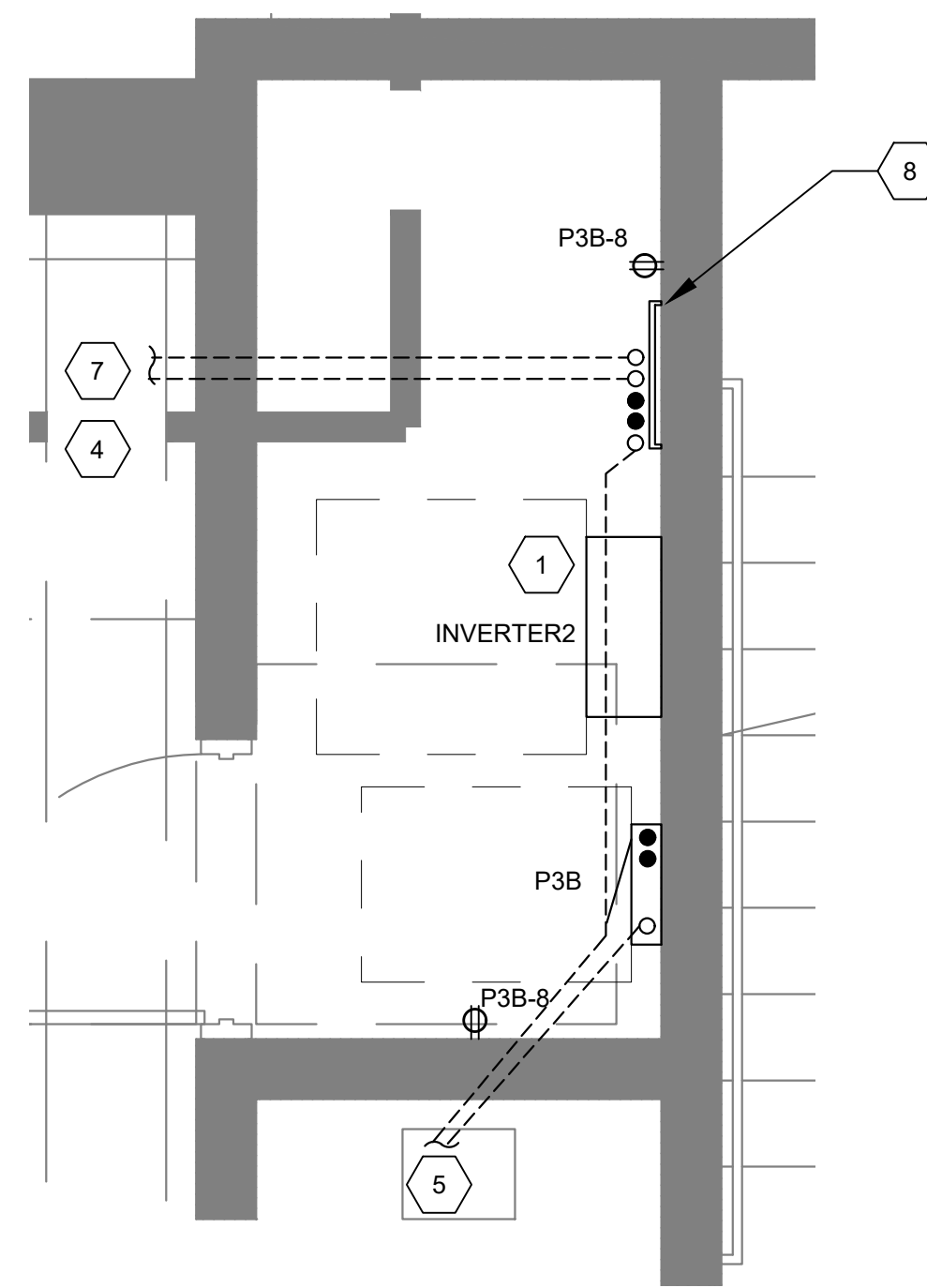
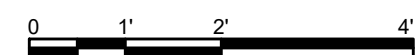




**ENLARGED MECHANICAL  
LEVEL 3**

1  
E3.3

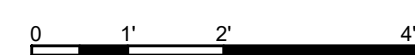
SCALE : 1/2" = 1'-0"



**ENLARGED STORAGE  
LEVEL 3**

2  
E3.3

SCALE : 1/2" = 1'-0"

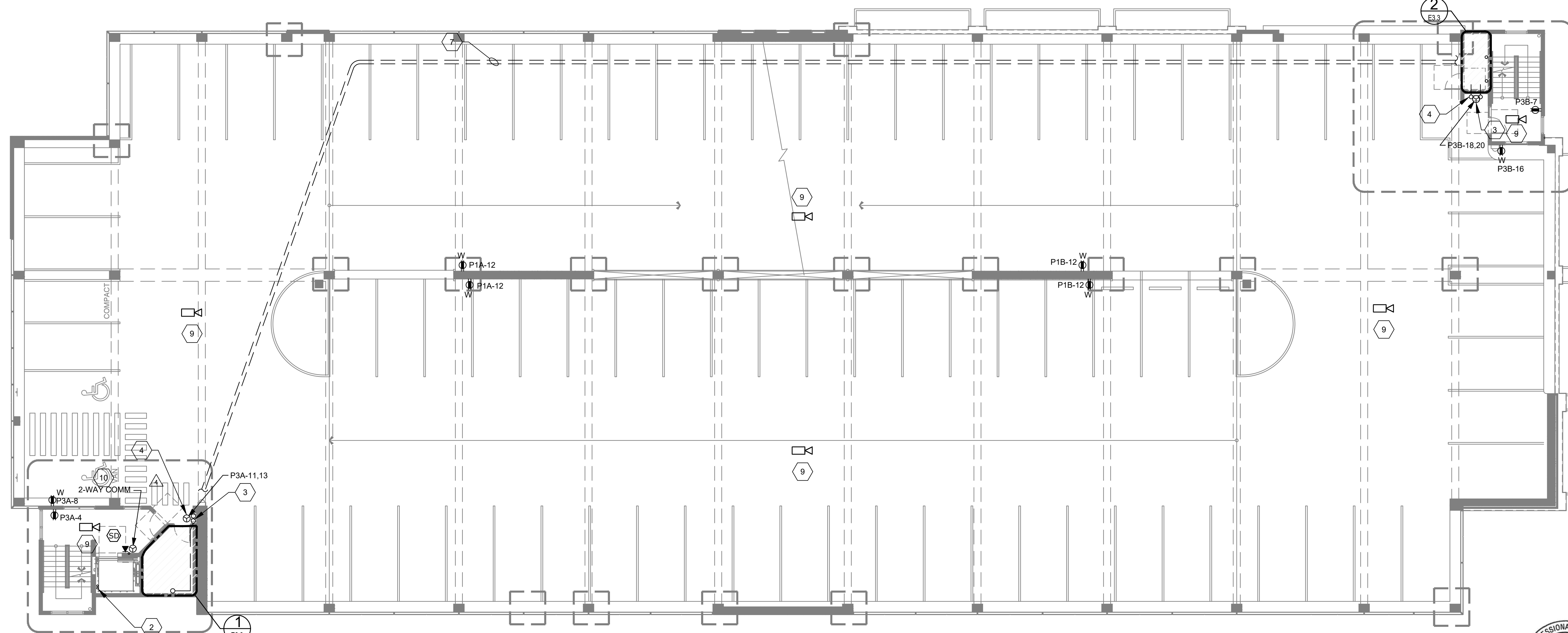


**KEY NOTES**

- 1 PROVIDE 120/208V 3KVA INVERTER WITH OUTPUT BREAKERS AS REQUIRED. REFERENCE ONE LINE DIAGRAM AND INVERTER PANEL SCHEDULE FOR MORE INFORMATION. MYERS POWER PRODUCTS EM-2 SERIES OR APPROVED EQUIVALENT.
- 2 PROVIDE (2) 2" CONDUITS FROM ELEVATOR CONTROLLER TO TOP OF HOISTWAY TO ELEVATOR MOTOR.
- 3 OFCI PARKING TICKET KIOSK. PROVIDE (1) 1" CONDUIT WITH (2)#10 AND (1)#10 FOR POWER PER CIRCUIT DESIGNATION. COORDINATE WITH FINAL POWER REQUIREMENTS OF EQUIPMENT SELECTED PRIOR TO INSTALLATION. COORDINATE FINAL LOCATION OF EQUIPMENT WITH ARCHITECT.
- 4 OFCI PARKING TICKET KIOSK. PROVIDE (1) 1" CONDUIT WITH PULL STRING BACK TO IT RACK.
- 5 CONDUITS TO PARKING KIOSK.
- 6 PROVIDE (2) 4" CONDUIT SLEEVES TO MECHANICAL ROOM BELOW OVER IT RACK. FIELD COORDINATE FINAL LOCATION OF IT RACK PRIOR INSTALLATION
- 7 PROVIDE (2) 4" CONDUITS TO MECHANICAL ROOM. CONDUITS TO PENETRATE THROUGH CEILING BELOW FOR PATHWAY DOWN TO MAIN ELECT/IT ROOM ON LEVEL-1.
- 8 PROVIDE 24" WALL MOUNTED LADDER RACK FOR CABLE MANAGEMENT FROM 12" AFF OR EQUIPMENT RACK TO 6" BELOW VERTICAL CONDUIT SLEEVE. TYPICAL FOR ALL STORAGE/UTILITY ROOMS WITH VERTICAL SLEEVES AS SHOWN.
- 9 OFCI SURVEILLANCE CAMERA. BASIS OF DESIGN IS POE. PROVIDE (1) 1" CONDUIT BACK TO IT CABINET IN MAIN ELECTRICAL ROOM. COORDINATE FINAL LOCATIONS WITH CITY PRIOR TO INSTALLATION. PROVIDE 1" CONDUIT AND BOX FOR 2-WAY COMMUNICATIONS BACK TO MAIN IDF.
- 10 PROVIDE 1" C FROM MAIN COMMUNICATOR TO COMMUNICATOR ON ABOVE LEVEL. POWER FOR MAIN COMMUNICATOR. POWER FOR MAIN COMMUNICATOR TO SUPPLY 24 POWER TO SLAVE COMMUNICATORS ON FLOORS ABOVE.

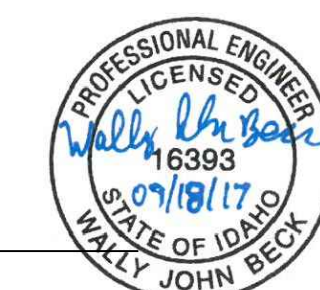
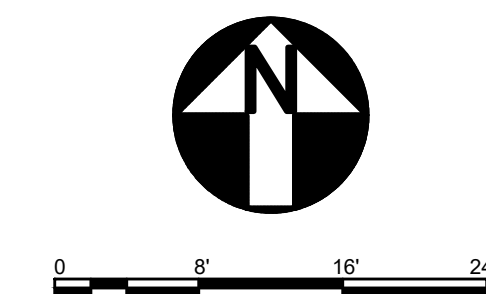
**SHEET NOTES**

1. SEE ARCHITECTURAL PLANS, SECTIONS AND ELEVATIONS FOR EXACT EQUIPMENT AND DEVICE LOCATIONS.
2. SEE ARCHITECTURAL PLANS FOR LOCATIONS OF SOUND, SMOKE AND FIRE RATED WALLS.
3. COORDINATE ALL INSLAB CONDUITS AND ROUTING WITH STRUCTURAL CONTRACTOR PRIOR TO INSTALLATION
4. COORDINATE CEILING MOUNTED DEVICES WITH ARCHITECTURAL AND REFLECTED CEILING PLANS.



**POWER PLAN - LEVEL 3**

SCALE : 3/32" = 1'-0"



**Trindera  
ENGINEERING**  
1875 N. LAKEWOOD DRIVE, #201  
COEUR D'ALENE, IDAHO 83814  
(209) 676-8001 (209) 676-0100

POWER PLAN - LEVEL 3

PERMIT SET  
11-08-17

DT PARKING STRUCTURE  
214 N 3RD ST.  
COEUR D'ALENE, IDAHO

LICENSED ARCHITECT  
RICHARD M. STAUFFER

AR-1376  
STATE OF IDAHO  
11-08-17

REV.	DATE	DESCRIPTION
0	8/25/2017	PERMIT SET
9	9/18/2017	BID SET
1	11/8/2017	PERMIT SET

PROJECT NO.: 1714  
DESIGNED BY: MWM  
DRAWN BY: CL  
SHEET NO.: E3.3