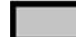



LEGEND

-  PROPOSED AREA TO BE DE-ANNEXED FROM RIVER URD
-  RIVER URD AREA

NOTE: PLAT INFORMATION WAS TAKEN DIRECTLY FROM THE KOOTENAI COUNTY ASSESSOR DATABASE AND WAS NOT RE-DRAFTED AS PART OF THIS PROJECT. THIS IS NOT A LAND SURVEY. NO FIELD WORK WAS PERFORMED.

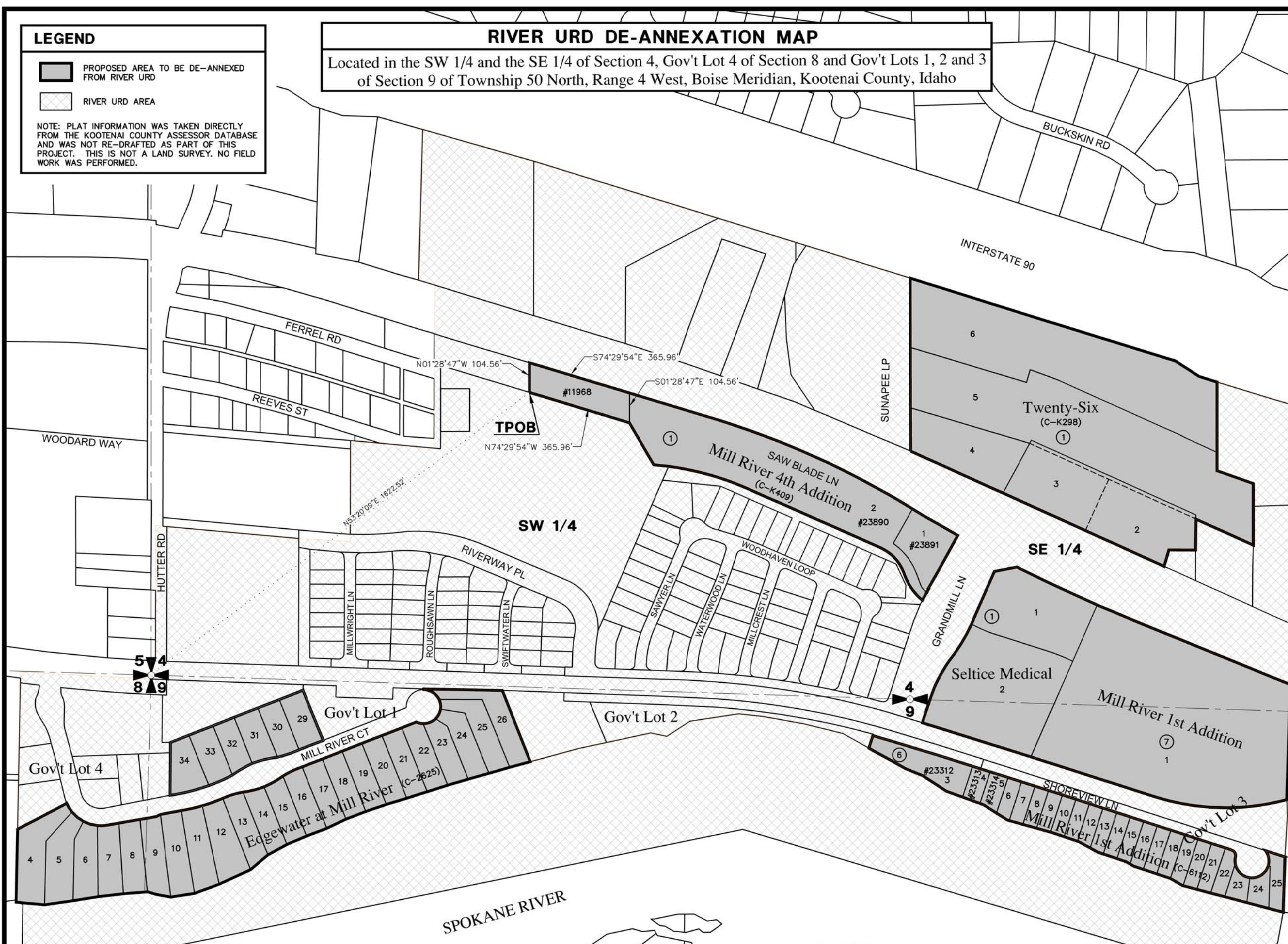
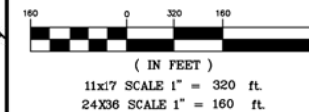
RIVER URD DE-ANNEXATION MAP

Located in the SW 1/4 and the SE 1/4 of Section 4, Gov't Lot 4 of Section 8 and Gov't Lots 1, 2 and 3 of Section 9 of Township 50 North, Range 4 West, Boise Meridian, Kootenai County, Idaho

COPYRIGHT 2016
Welch-Comer & Associates, Inc.
This document, and ideas and designs incorporated herein, as an instrument of professional service, is the property of Welch-Comer & Associates, Inc., and is not to be used in whole or in part for any other project without the written authorization of Welch-Comer & Associates, Inc.



GRAPHIC SCALE



WELCH-COMER
ENGINEERS | SURVEYORS

www.welchcomer.com
208-664-9382
350 E. Kathleen Ave.
Coeur d'Alene, ID 83815
(toll free) 877-815-5672
(fax) 208-664-5946

NO.	DATE	REVISION DESCRIPTION	BY

RIVER URD DE-ANNEXATION MAP

PROJECT NO.: 41196
DESIGNED BY: M.L.H.
DRAWN BY: J.A.L.
CHECKED BY:
DWG NAME: 41196DS02.DWG
DATE: 06-03-16
SHEET NO: