



City of Coeur d'Alene Municipal Milestones Newsletter

Issue 8/January 2015

IN THE NEWS

Tubbs Hill Work Will Open Trail to Wheelchairs

A trail improvement project on the east side of Tubbs Hill will make the city's Crown Jewel easier to access for our senior citizens and wheelchairs. Workers are smoothing out some of the ups and downs of the trail, removing small outcroppings of rocks and tree roots, and building new retaining walls that will provide scenic lookout areas.



The project was made possible through a \$29,000 grant from the Idaho Department of Parks and Recreation and a \$21,000 grant from Avista Corp. The improvements begin near the 11th Street entrance and continue up the trail for about 1,500 feet. Work will be completed this spring.

Levee Work on Dike Road Continues

In an effort to come into conformance with re-certification regulations imposed by FEMA, work has begun on repairs to the levee on the Dike Road on the NIC campus. Maintenance work has included the removal of roughly 360 trees that were identified as either dead or unhealthy.



Before

The tree removal

opened views to the Spokane River and will promote the health of the estimated 650 trees remaining along the scenic road. The maintenance work and tree removal is being done by city crews, reducing project costs.

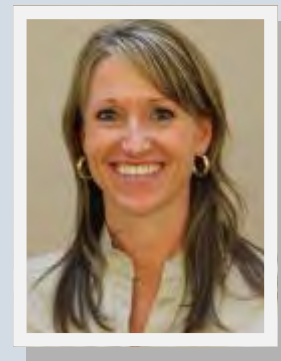


After

Newsletter Archives



CITY FACES



Hilary Anderson:

Planning a Healthy Future for Coeur d'Alene

As an advocate of healthy living and progressive growth, Hilary Anderson says a major focus in her new role as Coeur d'Alene's Community Planning Director will be to champion the concepts of livability and placemaking.

Great ... but what exactly does that mean?

Most simply put, Hilary says, "placemaking"

(Continued on page 2)



City of Coeur d'Alene Municipal Milestones Newsletter

Cd'A Firefighters Show Support for Law Enforcement

Blue lights have been placed in the window of the Coeur d'Alene Fire Department's Administration building at 320 Foster Avenue, to honor law enforcement.

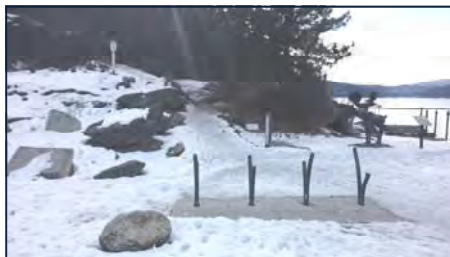


The gesture is part of the Project Blue Light national campaign. The lights were installed last week and will remain in place until next week.

"It's our way of showing our support for our police department and all local officers," said Fire Chief Kenny Gabriel. To show your support for law enforcement officers, place a blue light in your window.

Bike Racks Installed Near the Base of Tubbs Hill

When McEuen Park was constructed the city held off on installing all the bike racks to see where there was the greatest need. Trail coordinator Monte McCully said cyclists had been chaining bikes to sign posts and railing near the Rotary Harbor House so the city last week installed bike racks at that site. There are enough racks to accommodate eight bikes.



Volunteers Learn the Art of Tree Pruning

Community volunteers recently pruned 35 young trees at the City Hall parking lot as part of a program that trains local tree enthusiasts the proper way to remove branches to support a healthy urban forest.



The program is sponsored by Community Canopy, a partnership program of the cities of Coeur d'Alene, Hayden, Post Falls, Spokane, and the Spokane County Conservation District, with assistance from the University of Idaho Extension and Washington State University Extension. In the five years the program has been in place, volunteers have assisted in pruning over 560 trees

in Coeur d'Alene alone.

is creating unique destinations that have a sense of place. This is done by activating public places, increasing community activities, engaging businesses and property owners, expanding arts and culture, and continuing to build on the city's ever-growing trail network and parks to encourage active lifestyles. All of these things combined help make a community more livable, which helps drive economic development.

Physical design affects human behavior at all scales — buildings, neighborhoods, communities, and regions, Hilary says. The places in which we live, work, and play can affect our mental and physical well-being.

"Healthy living is already a priority for Coeur d'Alene and we can expand on that by making sure that existing areas and new areas of the city include trails and that we continue to emphasize walkability and connectivity," she says.

Many things the city already places a high priority on will continue to be a focus of the planning department, such as public access to the waterfront, protection of the riverfront and providing comprehensive planning of the Spokane River corridor. The planning department will also work closely with other city departments on master planning efforts.

Hilary and her staff will help guide new development projects so that they are designed thoughtfully, including connected road and trail networks, safe routes to schools, parks and recreation opportunities, community spaces and a mix of housing types.

(Continued on page 3)



City of Coeur d'Alene Municipal Milestones Newsletter

CITY SCOPE

Public Safety Bond Coming in May

Voters in May will consider a 10-year, \$6 million public safety bond. The measure would replace a \$7 million bond approved by voters in 2005. The bond will fund capital purchases for the police and fire departments, such as emergency vehicles with excessive mileage.

A lower interest rate and lower bond amount means the cost to property owners will be lower if the bond is approved in May. The owner of a median-priced house would pay \$23.45 per year if the bond passes, down from \$28.65 per year under the current bond.

“Public safety is a top priority of the city and I’m pleased with the high degree of professionalism and efficiency of our fire and police departments,” said Mayor Steve Widmyer.

KEEPING KIDS HEALTHY

Let’s Move! Campaign Organizes in Coeur d’Alene

Officials representing several departments in the city, the Panhandle Health District, Kroc Community Center, Heritage Health, School District 271, University of Idaho, Vision 2030, and other wellness organizations are developing strategies to support Let’s Move! - a campaign to end childhood obesity.



Let’s Move! seeks to combat the epidemic of childhood obesity and encourage a healthy lifestyle through “a comprehensive, collaborative, and community-oriented initiative that addresses all of the various factors that

lead to childhood obesity engaging every sector of society that impacts the health of children to provide schools, families and communities the simple tools they need to help kids be more active, eat better, and get healthy.”



“There is a growing demand for smaller homes and yards with less maintenance and improved connectivity that are within walking distance to destinations, activity centers and community gathering places,” Hilary says. “It is our goal to work with the development community to stay ahead of trends and help make Coeur d’Alene as livable as possible.”

As a member of the CDA 2030 Community Visioning Project board of directors, Hilary looks forward to implementing many of the plan’s goals.

“Many things identified in the plan have to do with planning and I am excited to see those through,” she said. These include efforts to improve the Seltice Way corridor from Northwest Boulevard west to the city limits at Huetter Road, improvements to East Sherman Avenue — the city’s eastern gateway, community gardens, and continuing to focus on healthy living designs communitywide.

Hilary holds an undergraduate degree from the University of Arizona in psychology with a minor in environmental science. She has a master’s degree from the U of A in planning.

Prior to assuming her position in Coeur d’Alene, Hilary served as planning and economic development manager for the city of Post Falls for three and a half years. Prior to that, Hilary was a planning consultant for 13 years providing professional planning services in Washington, California, Wyoming, and Arizona.