



LEGEND

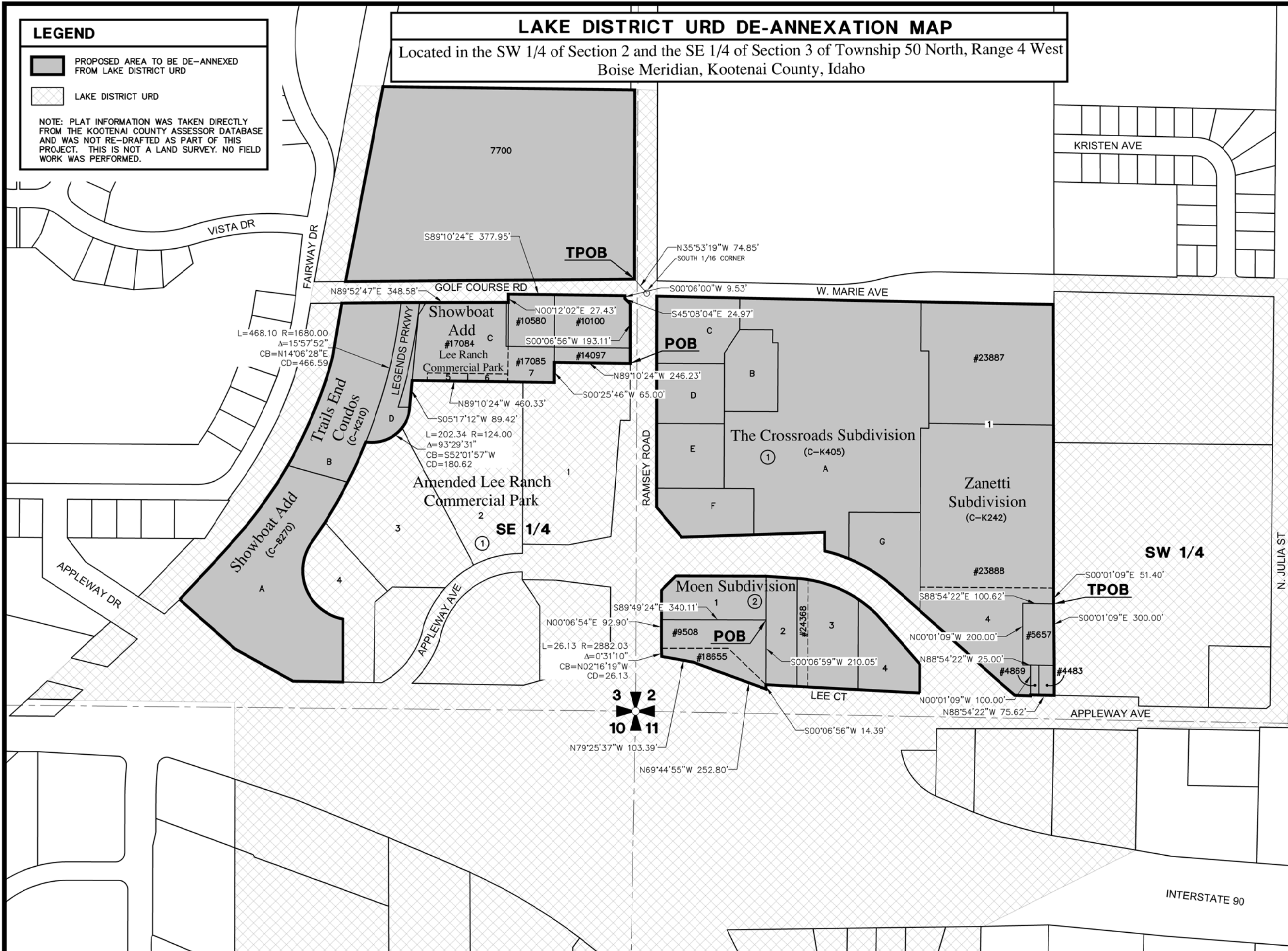
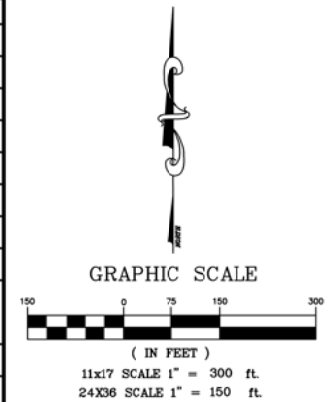
-  PROPOSED AREA TO BE DE-ANNEXED FROM LAKE DISTRICT URD
-  LAKE DISTRICT URD

NOTE: PLAT INFORMATION WAS TAKEN DIRECTLY FROM THE KOOTENAI COUNTY ASSESSOR DATABASE AND WAS NOT RE-DRAFTED AS PART OF THIS PROJECT. THIS IS NOT A LAND SURVEY. NO FIELD WORK WAS PERFORMED.

LAKE DISTRICT URD DE-ANNEXATION MAP

Located in the SW 1/4 of Section 2 and the SE 1/4 of Section 3 of Township 50 North, Range 4 West
Boise Meridian, Kootenai County, Idaho

COPYRIGHT 2016
Welch-Comer & Associates, Inc.
This document, and ideas and designs incorporated herein, as an instrument of professional service, is the property of Welch-Comer & Associates, Inc., and is not to be used in whole or in part for any other project without the written authorization of Welch-Comer & Associates, Inc.



WELCH-COMER
ENGINEERS | SURVEYORS

www.welchcomer.com
208-664-9382
350 E. Kathleen Ave. (toll free) 877-815-5672
Coeur d'Alene, ID 83815 (fax) 208-664-5946

NO.	DATE	REVISION DESCRIPTION	BY

LAKE DISTRICT URD DE-ANNEXATION MAP

PROJECT NO.:	41196
DESIGNED BY:	M.L.H.
DRAWN BY:	J.A.L.
CHECKED BY:	
DWG NAME:	41196DS01.DWG
DATE:	06-03-16
SHEET NO.:	