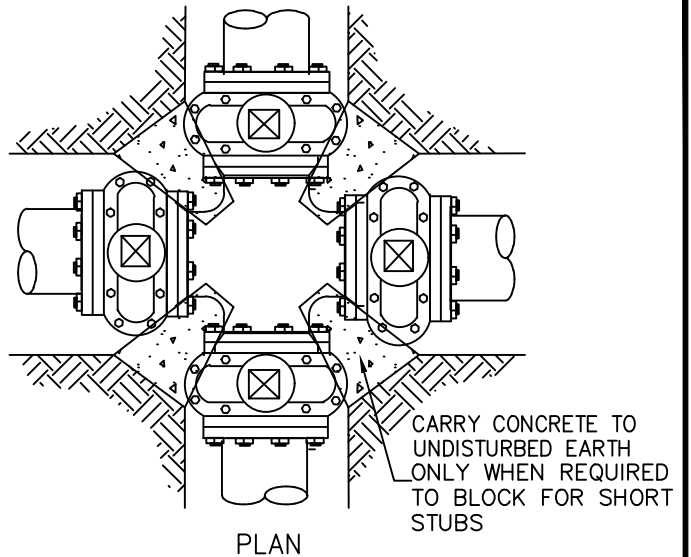
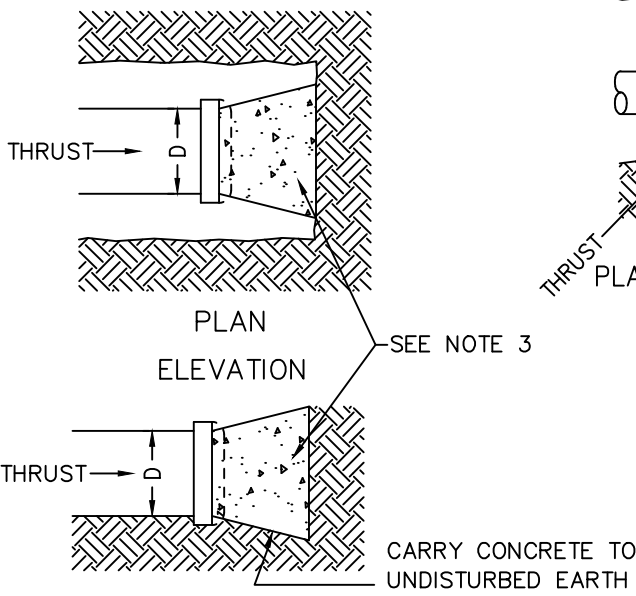


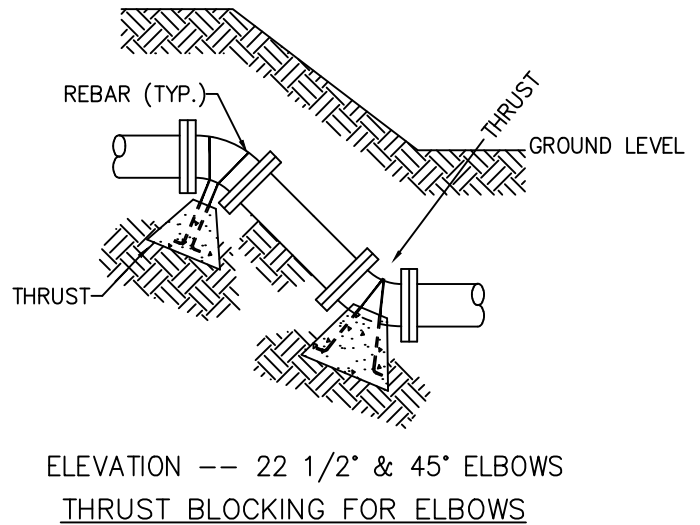
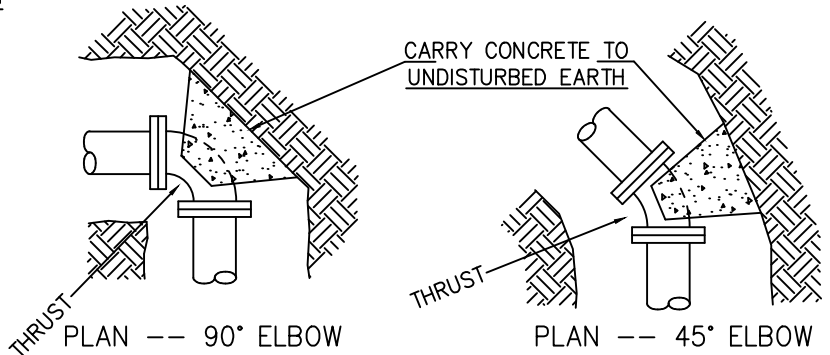
THRUST BLOCKING FOR TEES



THRUST BLOCKING FOR CROSS AS DIRECTED



THRUST BLOCKING FOR CAPS



THRUST BLOCKING FOR ELBOWS

- NOTES:**
1. ALL CONCRETE TO BE MIN 2500 P.S.I.
 2. KEEP CONCRETE CLEAR OF NUTS AND BOLTS WHEN USING FLANGED FITTINGS.
 3. SEE STANDARD DRAWING W-10 FOR THRUST BLOCK BEARING AREAS.
 4. USE MIN 4 MILL PLASTIC WRAPPED AGAINST FITTINGS TO PROTECT BOLTS.
 5. ECOLOGY BLOCKS MAY BE USED IF WITH PRIOR APPROVAL FOR MAINS 12" & LESS WITH THRUST CALCS PROVIDED TO CITY.

REVISION	APPROVED	DATE	CITY OF COEUR d'ALENE STANDARD DRAWING	APPROVED BY:	DATE:
				<h1>THRUST BLOCKING</h1>	<i>Chris Bodley</i>
					CITY ENGINEER, PE 10604
				DWG NO.	W-9