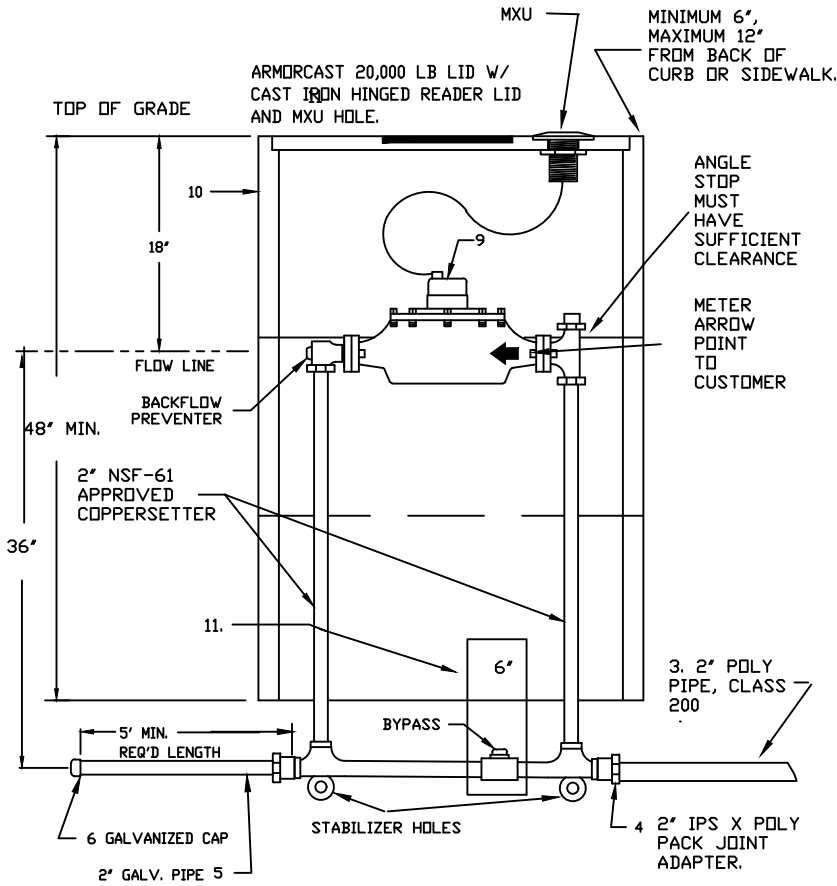
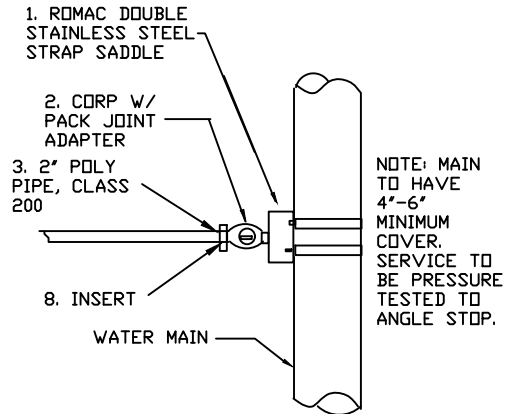


SIDE VIEW

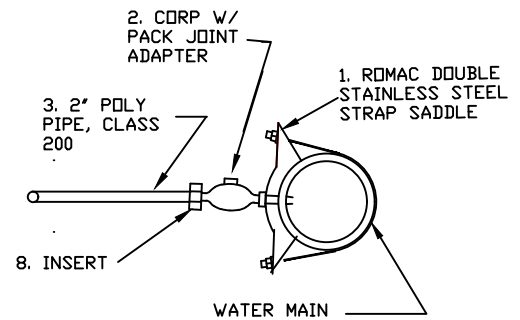


APPROVED TAPPING METHOD

TOP VIEW



SIDE VIEW

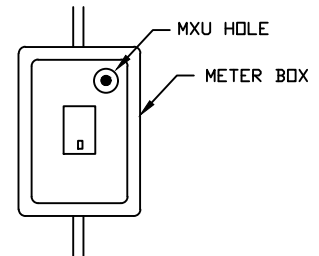


APPROVED TAPPING METHOD AND PARTS

| ITEM NO. | NO. REQ'D. | DESCRIPTION   |
|----------|------------|---|
| 1        | 1          | 2" ROMAC DOUBLE STRAP SERVICE SADDLE                                |
| 2        | 1          | IPS x 2" POLY PACK JOINT BRONZE CORPORATION STOP.                   |
| 3        | 1          | 2" x REQ. LENGTH - USE PIPE SIZE, 200 PSI POLYETHYLENE SERVICE LINE |
| 4        | 1          | 2" IPS x 2" POLY BRASS PACK JOINT ADAPTER                           |
| 5        | 1          | 2" x MIN 5' LONG - GALVANIZED IRON PIPE BACK SIDE OF BOX            |
| 6        | 1          | 2" GALVANIZED CAP.  |
| 7        | 1          | 2" NSF-61 APPROVED COPPERSETTER, ALL COMPONENTS                     |
| 8        | 2          | 2" POLY INSERTS WHERE NEEDED.                                       |
| 9        | 1          | 2" BADGER DISC TYPE RADIO READ METER (METER LENGTH=17")             |
| 10       | 4          | ARMORCAST OR HUBBEL METER BOX SECTIONS W/ RADIOREAD LID - 17" X 30" |
| 11       | 1          | 6" x 8" PVC SLEEVE SADDLE NOTCHED OVER BYPASS VALVE.                |

NOTE: ALL MATERIALS USED IN CONTACT WITH POTABLE WATER ARE TO BE NSF-61 COMPLIANT.

- NOTE: 1. TURBINE METER MAY BE USED FOR COMMERCIAL APPLICATIONS WITH A STRAINER, USE DISK METER FOR RESIDENTIAL DOMESTIC SETTINGS ONLY.
- 2. STABILIZER BAR MUST BE USED FOR SETTINGS HAVING POLYPIPE ON BOTH FRONT AND BACK SIDES.
- 3. NO PRIVATE CONNECTIONS OR FITTINGS ALLOWED INSIDE THE METER BOX.\*\*
- 4. POLY PIPE MAY BE USED WHEN CONNECTING TO AN EXISTING SERVICE IN THE EVENT THAT A GALVANIZED CONNECTION CANNOT BE EASILY MADE.



PLAN VIEW

| REVISION | APPROVED | DATE |
|----------|----------|------|
|          |          |      |
|          |          |      |
|          |          |      |
|          |          |      |

CITY OF COEUR d'ALENE STANDARD DRAWING

**2" COPPERSETTER  
STANDARD PIT SETTING**

APPROVED BY:

*Chris Busby* 4/13/13  
CITY ENGINEER, PE 10604 DATE:

DWG NO. W-14