

Coeur d'Alene Police



2019 Annual Report



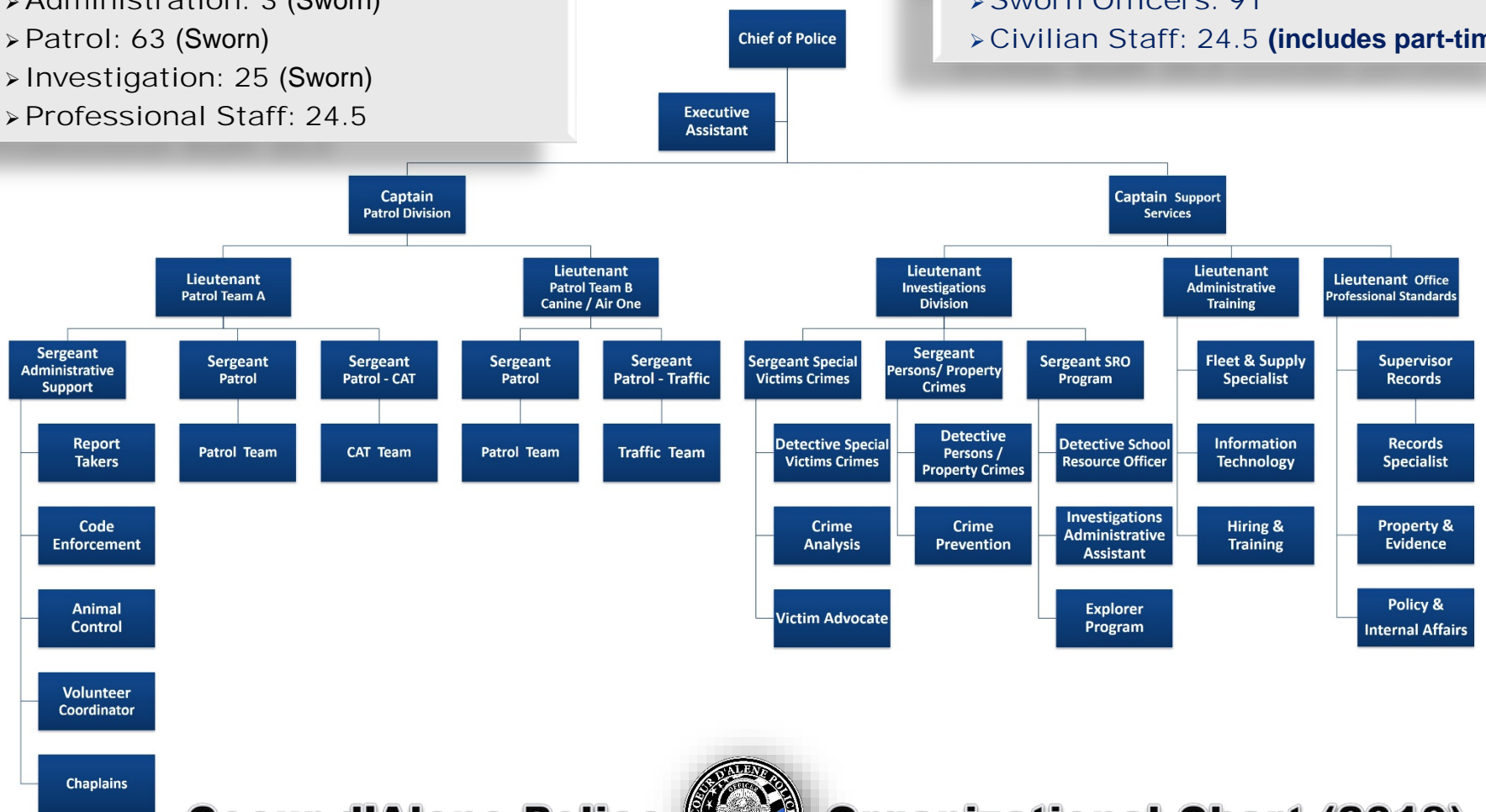
Coeur d'Alene PD: Personnel

Employees Per Department:

- Administration: 3 (Sworn)
- Patrol: 63 (Sworn)
- Investigation: 25 (Sworn)
- Professional Staff: 24.5

Police Total Employees: 115.5

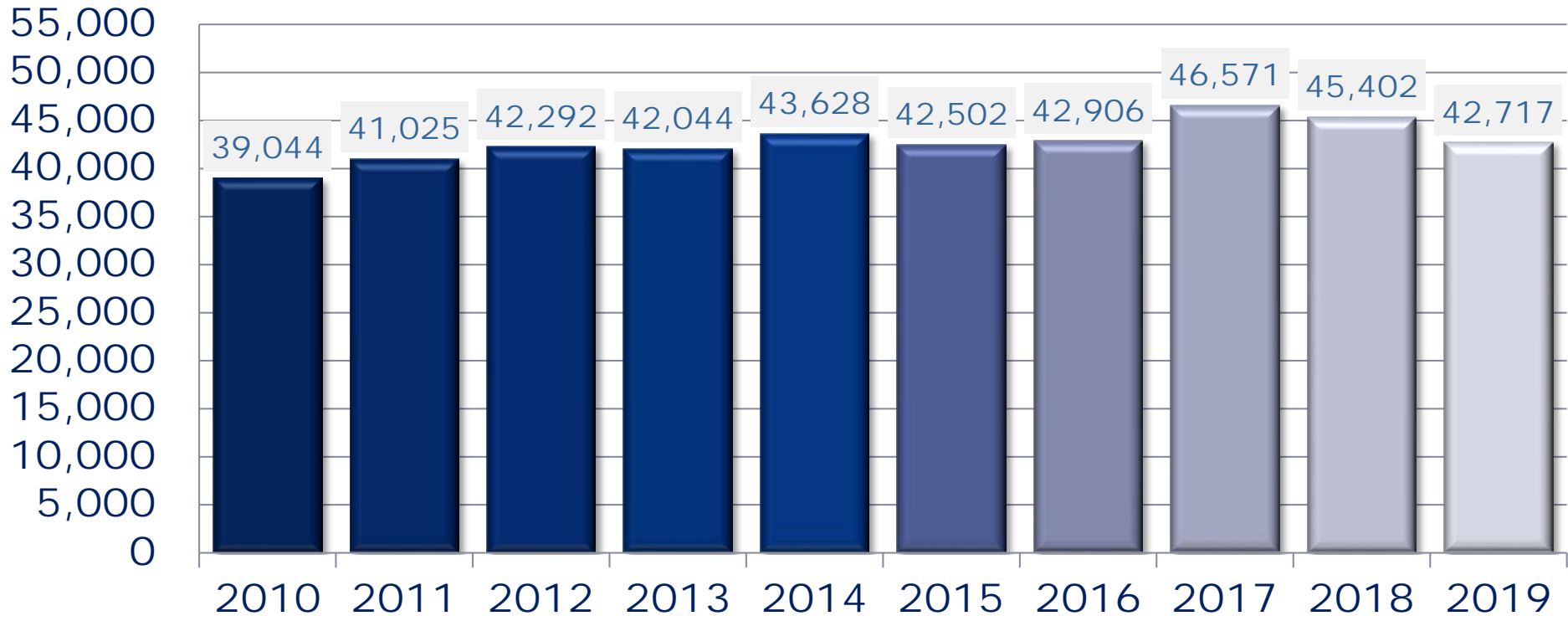
- Sworn Officers: 91
- Civilian Staff: 24.5 (includes part-time)





CALLS FOR SERVICE TRENDS

Calls for Service: 2010 - 2019

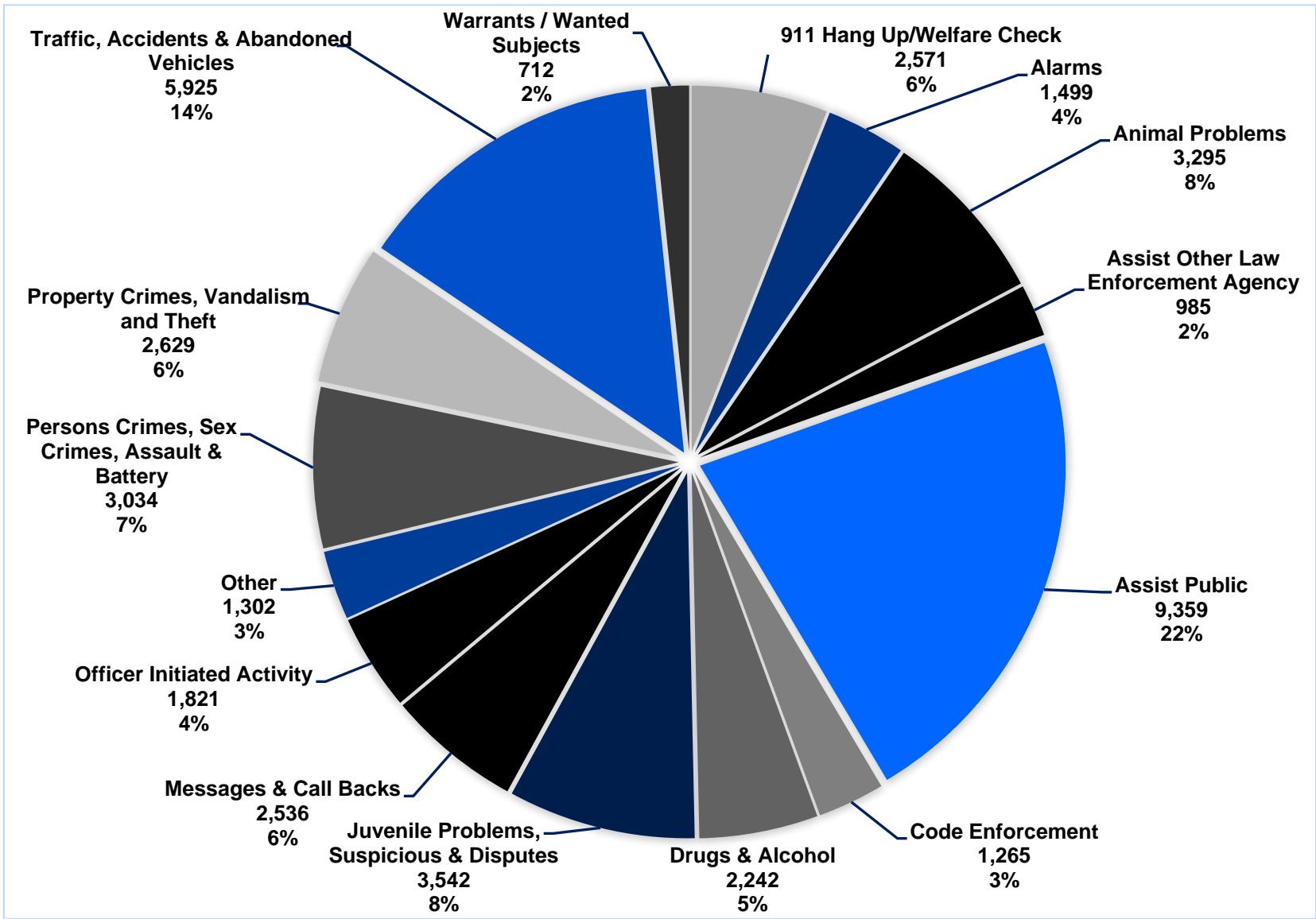


Increase of 9% since 2010
Decrease of 6% since 2018



CALLS FOR SERVICE

2019 by Type





PART 1 & 2 CRIME

2018 – 2019 Comparison

Coeur d'Alene Police: Part 1 Crimes

| OFFENSE | 2018 | 2019 | % Chg |
|----------------------------|-------------|------------|----------------|
| Aggravated Assault | 106 | 76 | -28% |
| Arson | 8 | 10 | 25% |
| Auto Burglary | 180 | 147 | -18% |
| Burglary - Non Resid | 29 | 20 | -31% |
| Burglary - Resid | 113 | 57 | -50% |
| Rape | 56 | 40 | -29% |
| Homicide | 1 | 0 | N/C |
| Robbery - Commercial | 3 | 2 | -33% |
| Robbery - Person | 16 | 6 | -63% |
| Theft | 590 | 442 | -25% |
| Vehicle Theft | 76 | 47 | -38% |
| Part 1 Crimes Total | 1178 | 847 | -28.10% |

These statistics are preliminary counts of the original police incident reports and may vary from the final UCR (Uniform Crime Reporting) statistics published by the FBI.

Part 1 Crimes Comparison to Previous Years:

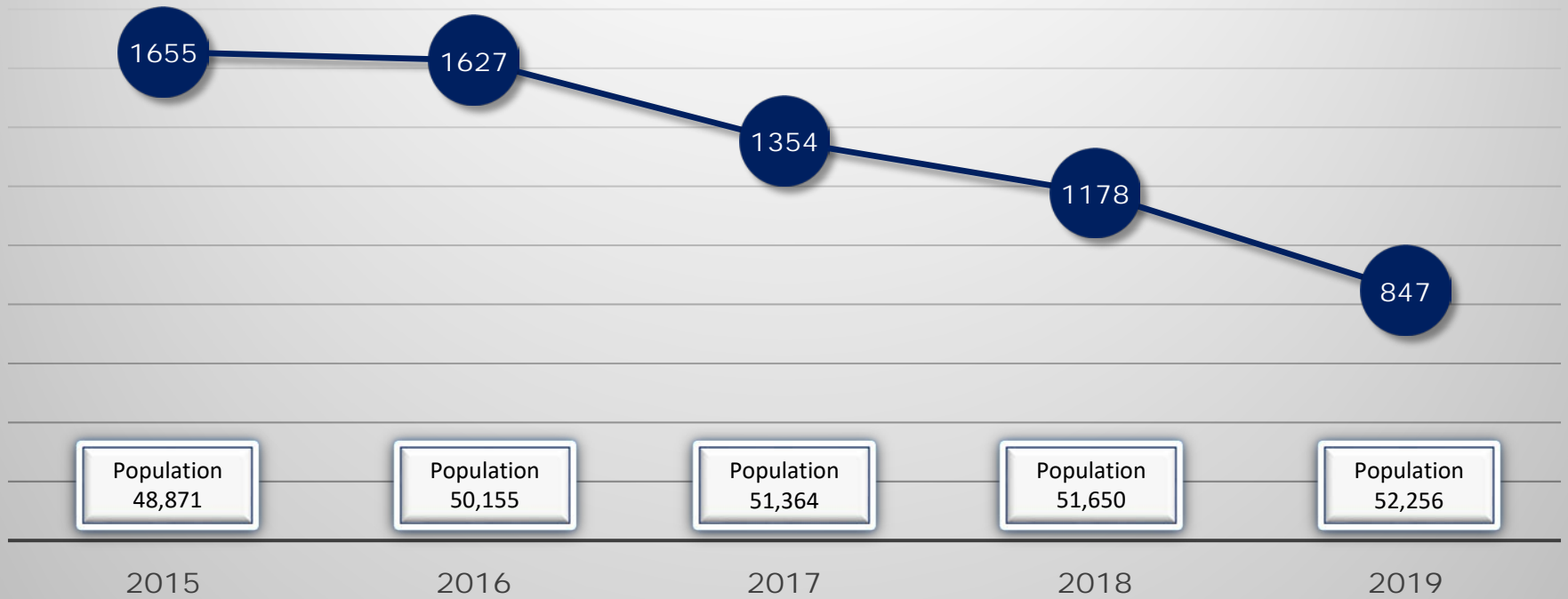
2017 to 2019 decrease of 37.44%
 2016 to 2019 decrease of 47.94%
 2015 to 2019 decrease of 48.82%
 2014 to 2019 decrease of 59.49%

Coeur d'Alene Police: Part 2 Crimes

| OFFENSE | 2018 | 2019 | % Chg |
|----------------------------|-------------|-------------|----------------|
| Alcohol Offense | 138 | 121 | -12% |
| Assault | 450 | 420 | -7% |
| Child Abuse | 96 | 78 | -19% |
| Communications Off. | 15 | 12 | -20% |
| Conspiracy | 17 | 6 | -65% |
| CPOR/NCOV Violations | 159 | 87 | -45% |
| Custodial Interference | 21 | 22 | 5% |
| Disturbing the Peace | 29 | 25 | -14% |
| Drugs | 1266 | 962 | -24% |
| DUI | 451 | 420 | -7% |
| Embezzlement | 21 | 18 | -14% |
| False Info to LE | 52 | 33 | -37% |
| Fraud/Forgery | 166 | 153 | -8% |
| Harassment | 54 | 26 | -52% |
| Intimidation | 62 | 76 | 23% |
| Juvenile Problem | 200 | 224 | 12% |
| Kidnapping | 12 | 10 | -17% |
| Mail Tampering | 10 | 4 | -60% |
| Neglect (Elderly) | 10 | 6 | -40% |
| Obstructing | 120 | 91 | -24% |
| Pornography | 13 | 13 | 0% |
| Recvr'd Stolen Property | 38 | 26 | -32% |
| Sex Offender Violation | 5 | 4 | -20% |
| Sex Offense | 56 | 44 | -21% |
| Trespassing | 48 | 41 | -15% |
| Vandalism | 232 | 231 | 0% |
| Weapon Offense | 36 | 31 | -14% |
| Other | 55 | 53 | -4% |
| Part 2 Crimes Total | 3832 | 3237 | -15.53% |



Coeur d'Alene Part 1 Crimes Comparison 2015 - 2019



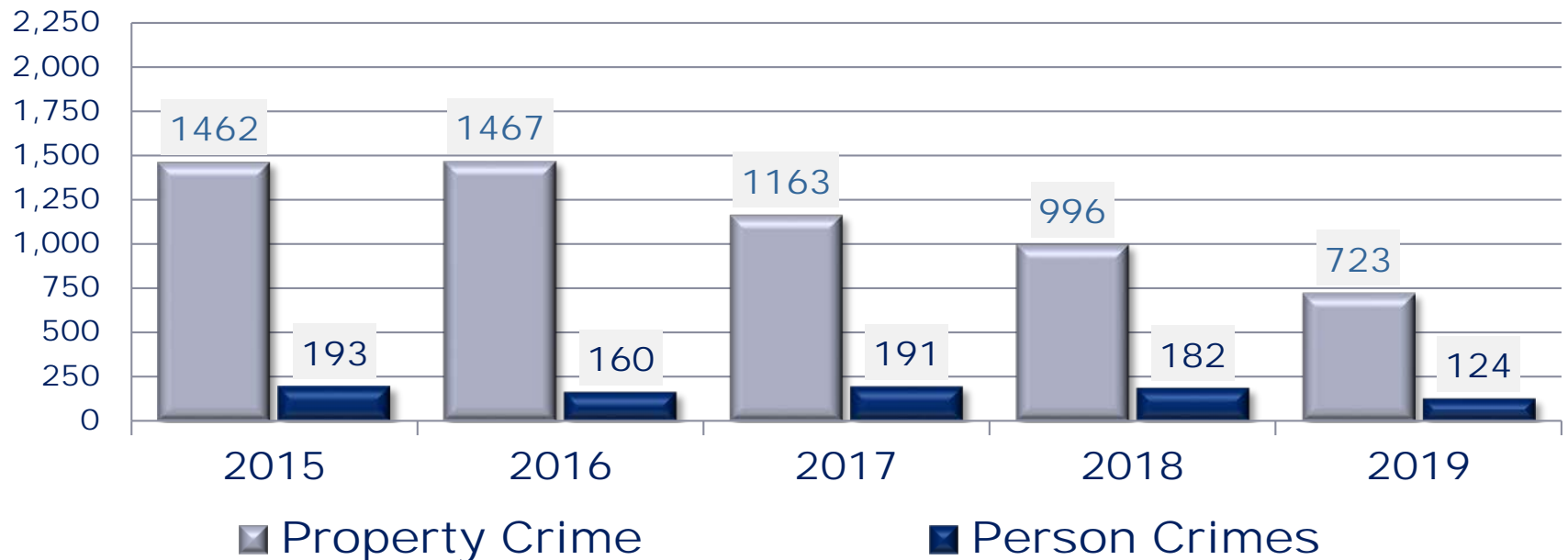
Part 1 Crimes YTD Comparison to previous years:

2018 to 2019 decrease of 28.10%
2017 to 2019 decrease of 37.44%
2016 to 2019 decrease of 47.94%
2015 to 2019 decrease of 48.82%



PART 1 CRIME by Crime Group

Property & Person Crimes: 2015 - 2019



Property Crimes Comparison to Previous Years:

- 2018 to 2019 decrease of 27.41%
- 2017 to 2019 decrease of 37.83%
- 2016 to 2019 decrease of 50.72%
- 2015 to 2019 decrease of 50.55%

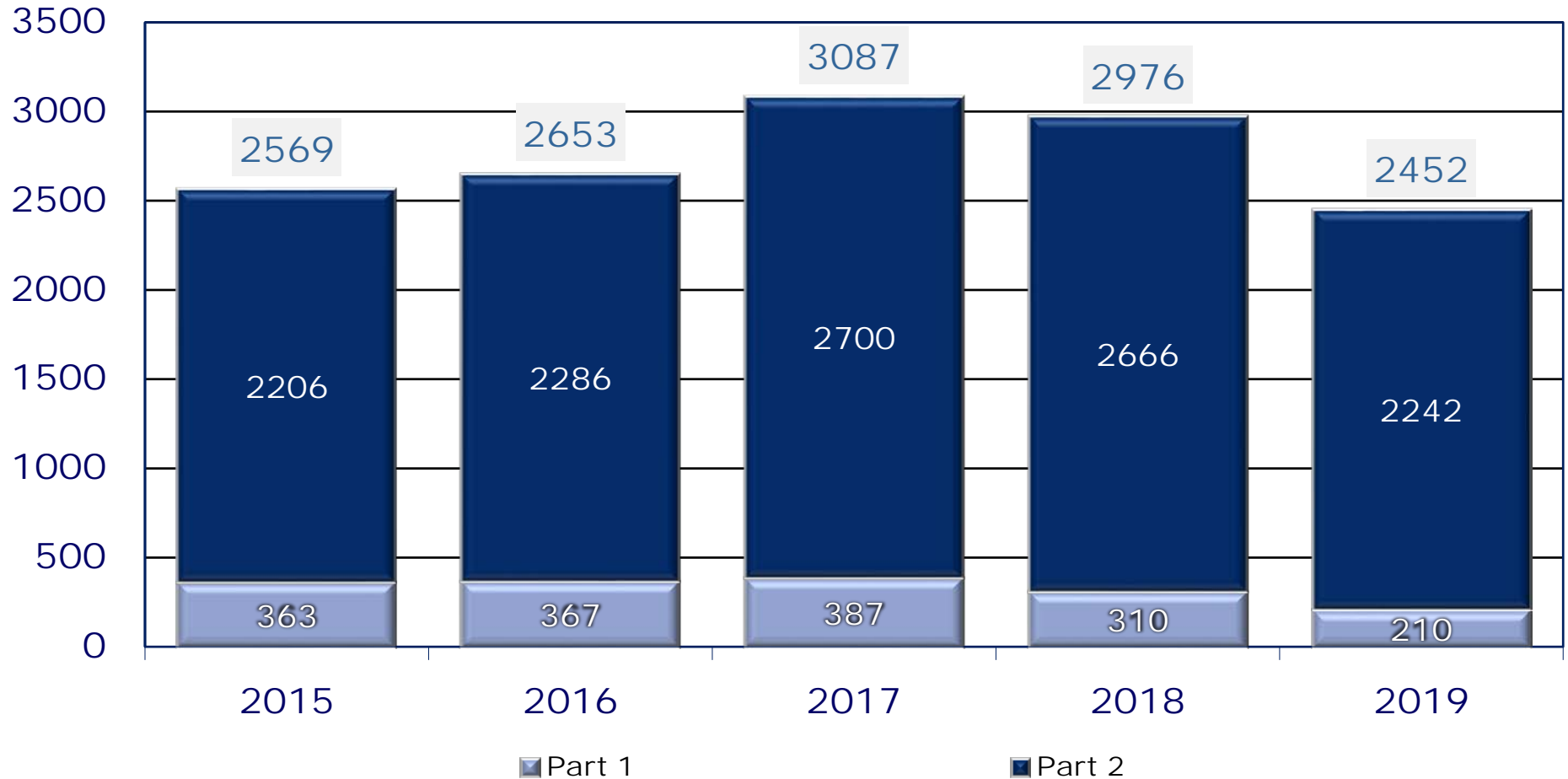
Person Crimes Comparison to Previous Years:

- 2018 to 2019 decrease of 31.87%
- 2017 to 2019 decrease of 35.08%
- 2016 to 2019 decrease of 22.50%
- 2015 to 2019 decrease of 35.75%

**Property Crimes include Burglary, Theft, Shoplifting, Arson and Vehicle Theft.
Person Crimes include Homicide, Assault, Rape, and Robbery.**



Part 1 & 2 Crime Arrests by Year

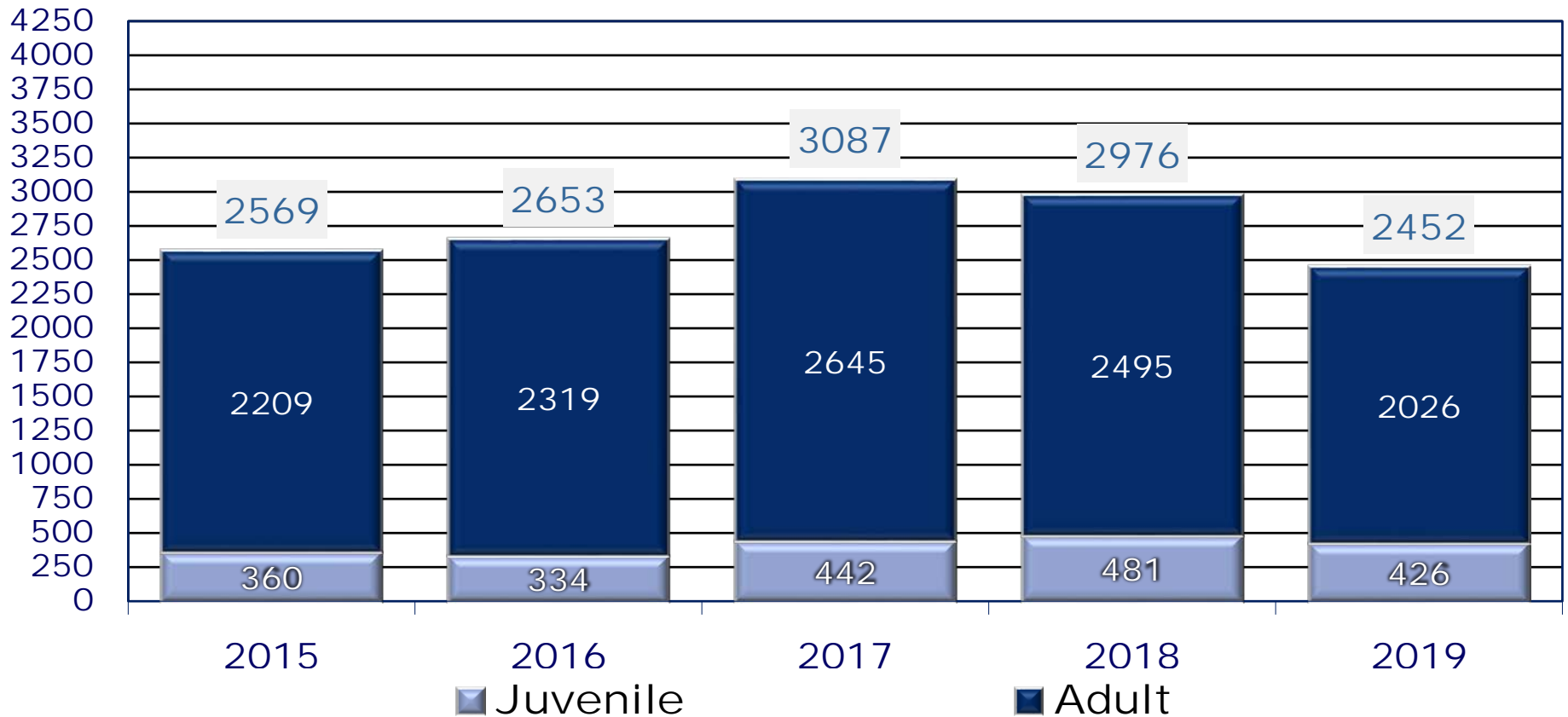


The 2019 statistics are preliminary counts of the original police incident reports and may vary from the final UCR (Uniform Crime Reporting) statistics published by the FBI.



Arrests: Adult & Juveniles

Adult, Juvenile & Total Arrests

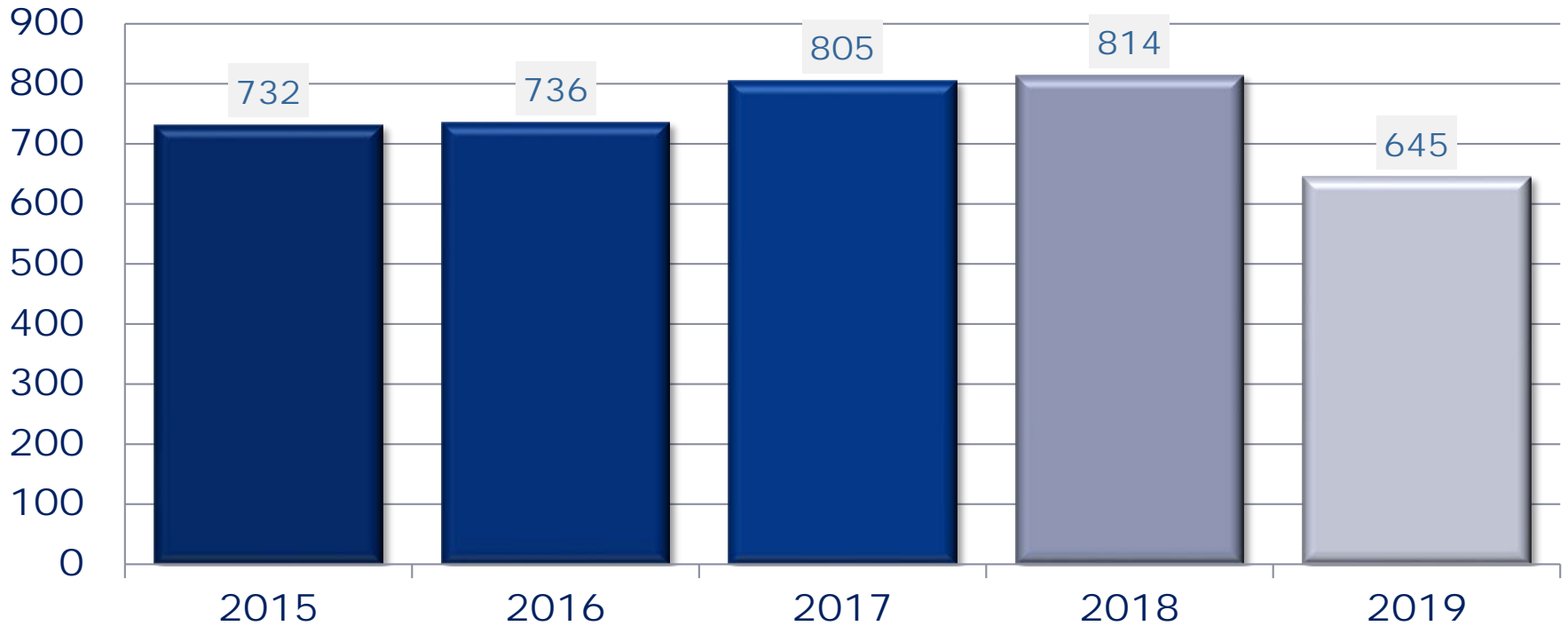


The 2019 statistics are preliminary counts of the original police incident reports and may vary from the final UCR (Uniform Crime Reporting) statistics published by the FBI.



Warrant Arrests

Warrant Arrests 2015 to 2019 Felony & Misdemeanor





Accidents by Type & DUI

Accidents & Driving Under the Influence (DUI)

| | 2015 | 2016 | 2017 | 2018 | 2019 |
|-------------------------|------|------|------|------|------|
| Reportable Accidents | 827 | 947 | 938 | 835 | 803 |
| Injury Accidents | 270 | 303 | 267 | 244 | 189 |
| Non-Injury Accidents | 557 | 644 | 671 | 591 | 614 |
| US-95 Related Accidents | 121 | 129 | 132 | 140 | 111 |
| DUI Related Accidents | 38 | 40 | 48 | 37 | 24 |
| DUIs | 355 | 350 | 391 | 452 | 418 |



Coeur d'Alene Police: K9



DRUGS RECOVERED

Marijuana
Methamphetamine
Heroin
Cocaine

ARRESTS (212)

Patrol: 64
Detection: 148

DEPLOYMENTS (556)

Patrol: 167
Narcotic: 389



Community Outreach



2019 Children's Hospital Toy Drive
Donated \$25,000 of toys to
Sacred Heart Children's Hospital & Kootenai Health



Victim's Advocate



COEUR D'ALENE POLICE



Victim Advocate Service Unit

*Supporting Victims of
Domestic Violence,
Sexual Assault, Stalking and
Sexual Abuse of Children*

VICTIM SERVICES (208) 769-2220 ext. 856
victimservices@cdaid.org

EMERGENCY: 911
NON-EMERGENCY: (208) 769-2320

POLICE TIPS: (208) 769-2296 or
policetips@cdaid.org

- The Coeur d'Alene Police Victim's Advocate Service Unit was established in 2018 through Grant Funds
- This program provides Victim Services for:
 - On Scene Response for Traumatic Events
 - Assistance and Referrals to Victims of Domestic and Sexual Violence
- In 2019, the Victim's Advocate Assisted:
 - 361 initial contacts with victims and resources as well as 327 follow-up contacts.
 - These contacts involved:
 - 54 Children
 - 634 Adults



Police Activity League



The Police Activity League (PAL) began in 2019 as an attempt to bolster the relationship between the community and officers. Working with School District 271 Summer Plus, Boys & Girls Club and Youth Sports, officers interacted with our youth and using positive reinforcements taught "Core Values" like respect, honesty, leadership, citizenship, integrity and compassion.

In 2019, PAL encountered approximately 440 participants.



Crime Prevention



The Coeur d'Alene Police Crime Prevention Program provides Assistance and Service to the Community through:

- Community Events / Sharing Crime Prevention Tips & Strategies
- Special Programs like the Coffee with a COP Program
- Meetings and one-on-one interactions with Local Businesses and the Community to Discuss Community Concerns and Ways to Work Together to Reduce Crime such as:
 - Crime Prevention Through Environmental Design
 - Establishing Crime Free Programs at Apartment Complexes



Volunteers



- 18 Active Volunteers
- 3220 hours of service in 2019
- Parking Enforcement & Neighborhood Patrols