

# Coeur d'Alene Police



2020 Annual Report



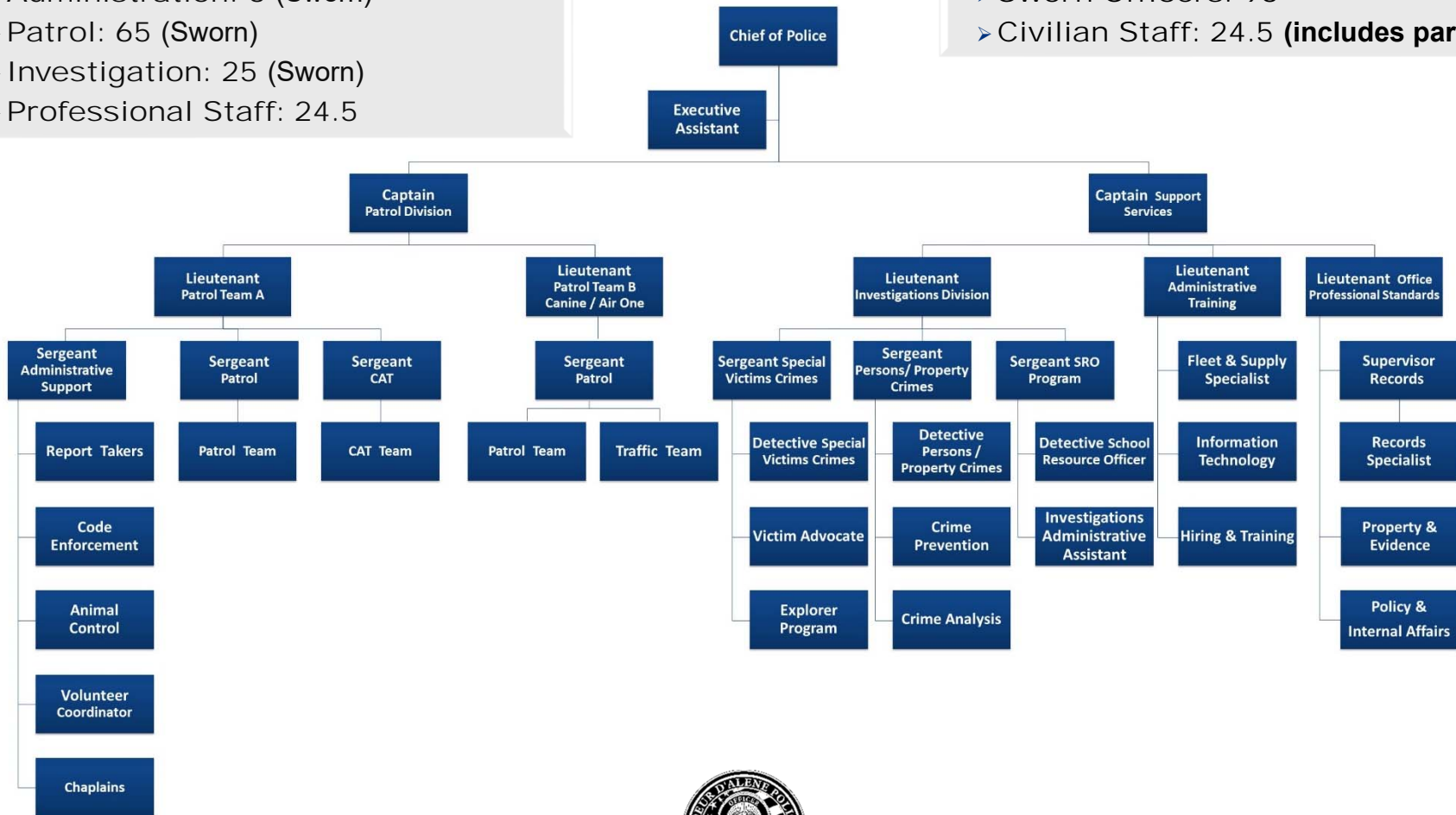
# Coeur d'Alene PD: Personnel

Employees Per Department:

- Administration: 3 (Sworn)
- Patrol: 65 (Sworn)
- Investigation: 25 (Sworn)
- Professional Staff: 24.5

Police Total Employees: 117.5

- Sworn Officers: 93
- Civilian Staff: 24.5 (includes part-time)



Coeur d'Alene Police

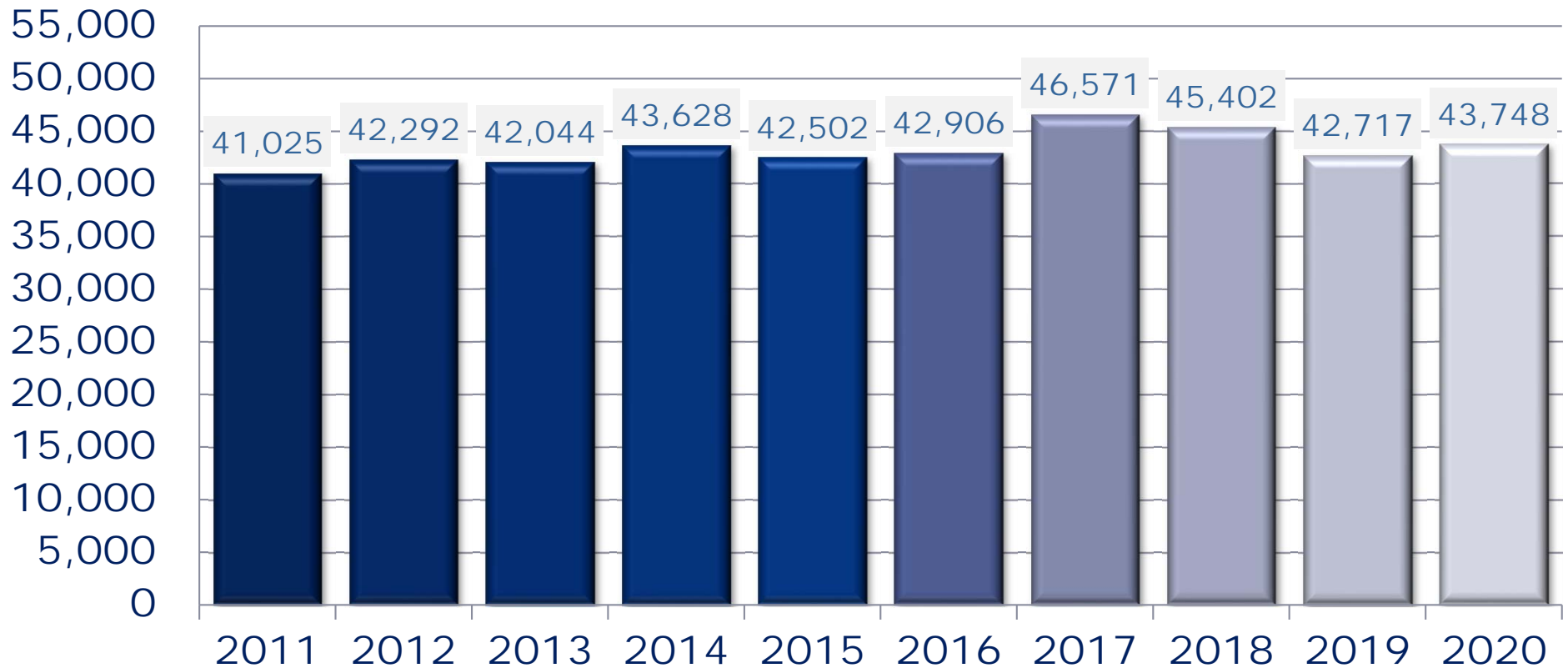


Organizational Chart (2020)



# CALLS FOR SERVICE TRENDS

## Calls for Service: 2011 - 2020



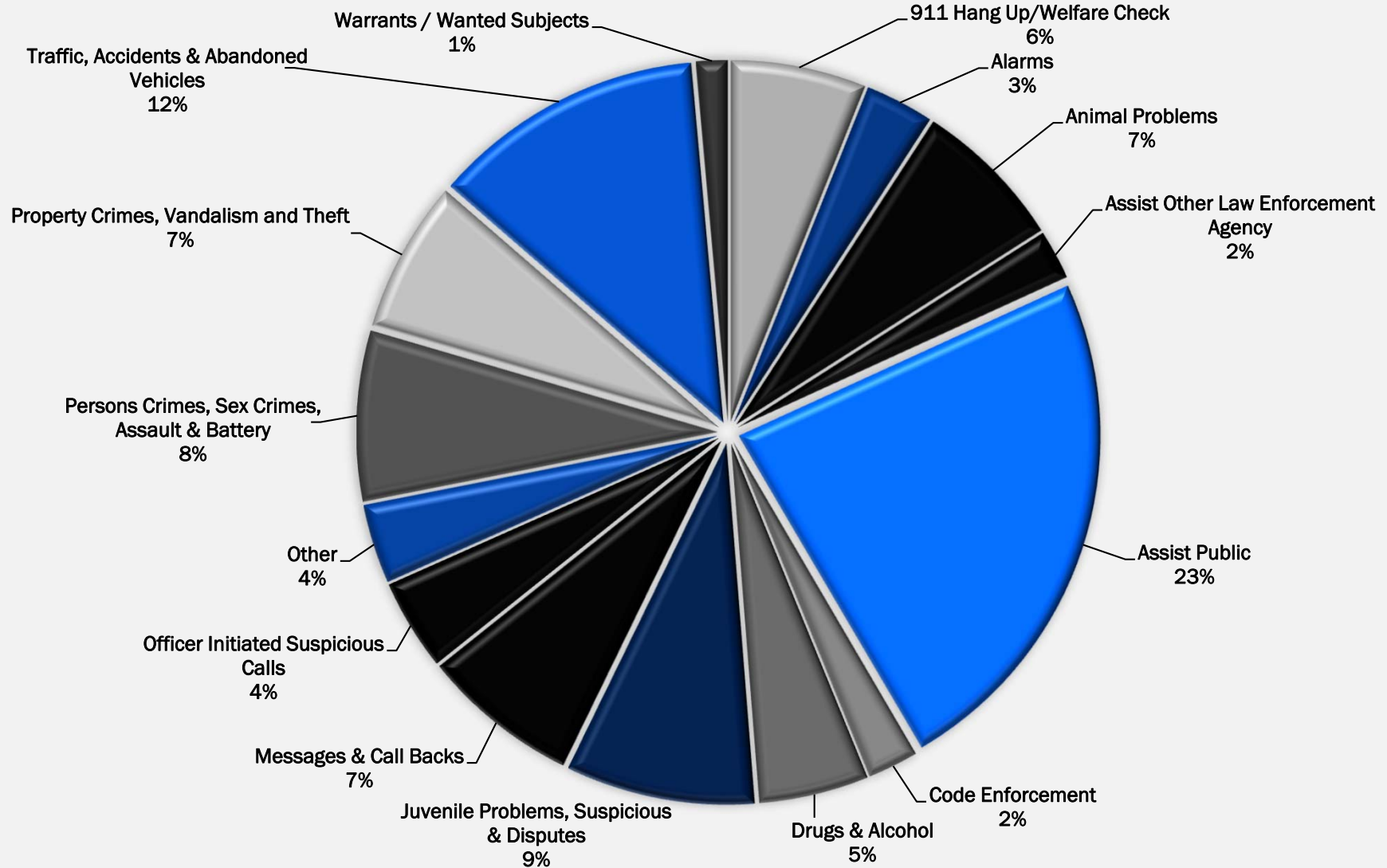
**Increase of 6.6% since 2011**

**Increase of 2.4% since 2019**



# CALLS FOR SERVICE

2020 by Type





# PART 1 & 2 CRIME

## 2019 – 2020 Comparison

### Coeur d'Alene Police: Part 1 Crimes

OFFENSE	2019	2020	% Chg
Aggravated Assault	76	103	36%
Arson	10	5	-50%
Auto Burglary	147	276	88%
Burglary - Non Resid	20	28	40%
Burglary - Resid	57	56	-2%
Rape	40	53	33%
Homicide	0	1	N/C
Robbery - Commercial	2	3	50%
Robbery - Person	6	4	-33%
Theft	442	426	-4%
Vehicle Theft	47	42	-11%
<b>Part 1 Crimes Total</b>	<b>847</b>	<b>997</b>	<b>17.71%</b>

These statistics are preliminary counts of the original police incident reports and may vary from the final UCR (Uniform Crime Reporting) statistics published by the FBI.

### Part 1 Crimes Comparison to Previous Years:

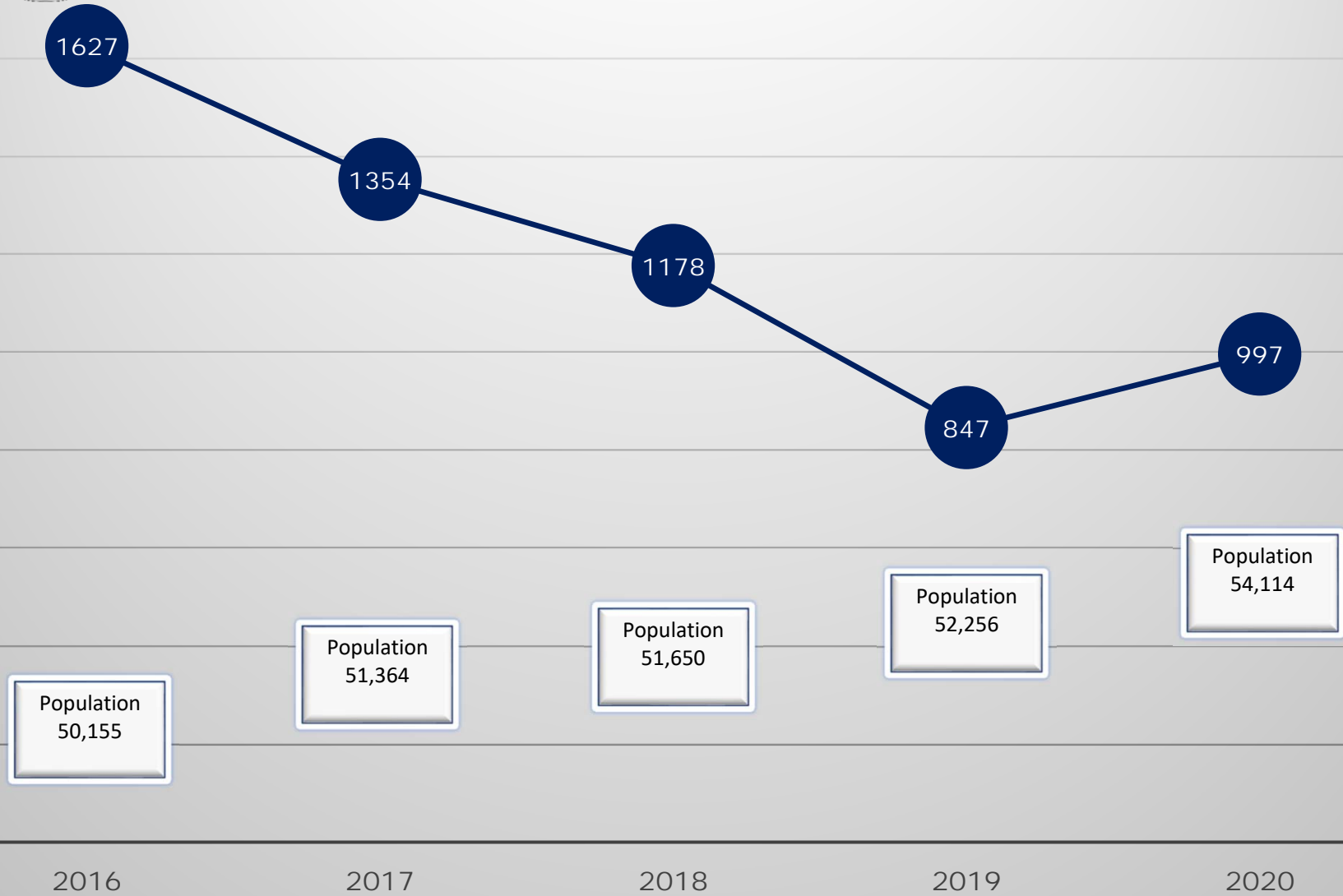
2018 to 2020 decrease of 15.37%  
 2017 to 2020 decrease of 26.37%  
 2016 to 2020 decrease of 38.72%  
 2015 to 2020 decrease of 39.76%  
 2014 to 2020 decrease of 52.32%

### Coeur d'Alene Police: Part 2 Crimes

OFFENSE	2019	2020	% Chg
Alcohol Offense	121	120	-1%
Assault	420	431	3%
Child Abuse	78	145	86%
Communications Off.	12	7	-42%
Conspiracy	6	17	183%
CPOR/NCOV Violations	87	98	13%
Custodial Interference	22	25	14%
Disturbing the Peace	25	37	48%
Drugs	962	956	-1%
DUI	420	442	5%
Embezzlement	18	17	-6%
False Info to LE	33	42	27%
Fraud/Forgery	153	126	-18%
Harassment	26	53	104%
Intimidation	76	71	-7%
Juvenile Problem	224	118	-47%
Kidnapping	10	13	30%
Mail Tampering	4	11	175%
Neglect (Elderly)	6	10	67%
Obstructing	91	116	27%
Pornography	13	15	15%
Recovered Stolen Property	26	20	-23%
Sex Offender Violation	4	7	75%
Sex Offense	44	44	0%
Trespassing	41	90	120%
Vandalism	231	269	16%
Weapon Offense	31	39	26%
Other	53	66	25%
<b>Part 2 Crimes Total</b>	<b>3237</b>	<b>3405</b>	<b>5.19%</b>



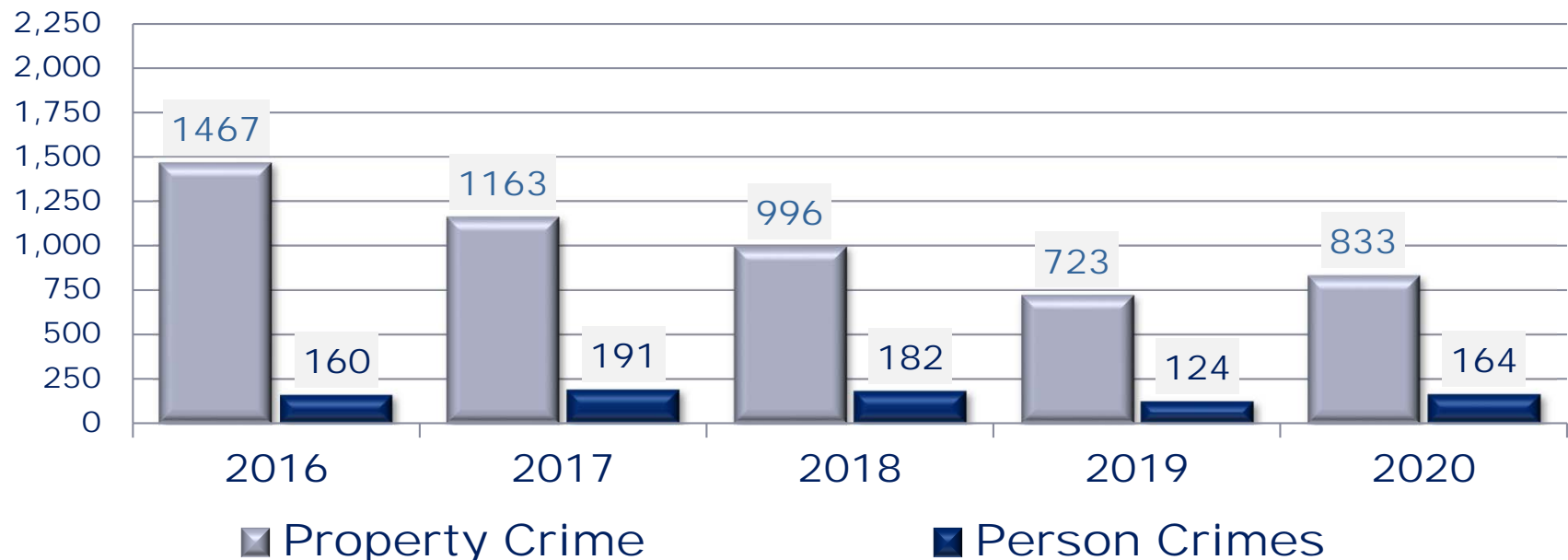
# Coeur d'Alene Part 1 Crimes Comparison 2016 - 2020





# PART 1 CRIME by Crime Group

## Property & Person Crimes: 2016 - 2020



### Property Crimes Comparison to Previous Years:

2019 to 2020 increase of 15.21%  
2018 to 2020 decrease of 16.37%  
2017 to 2020 decrease of 28.37%  
2016 to 2020 decrease of 43.22%

### Person Crimes Comparison to Previous Years:

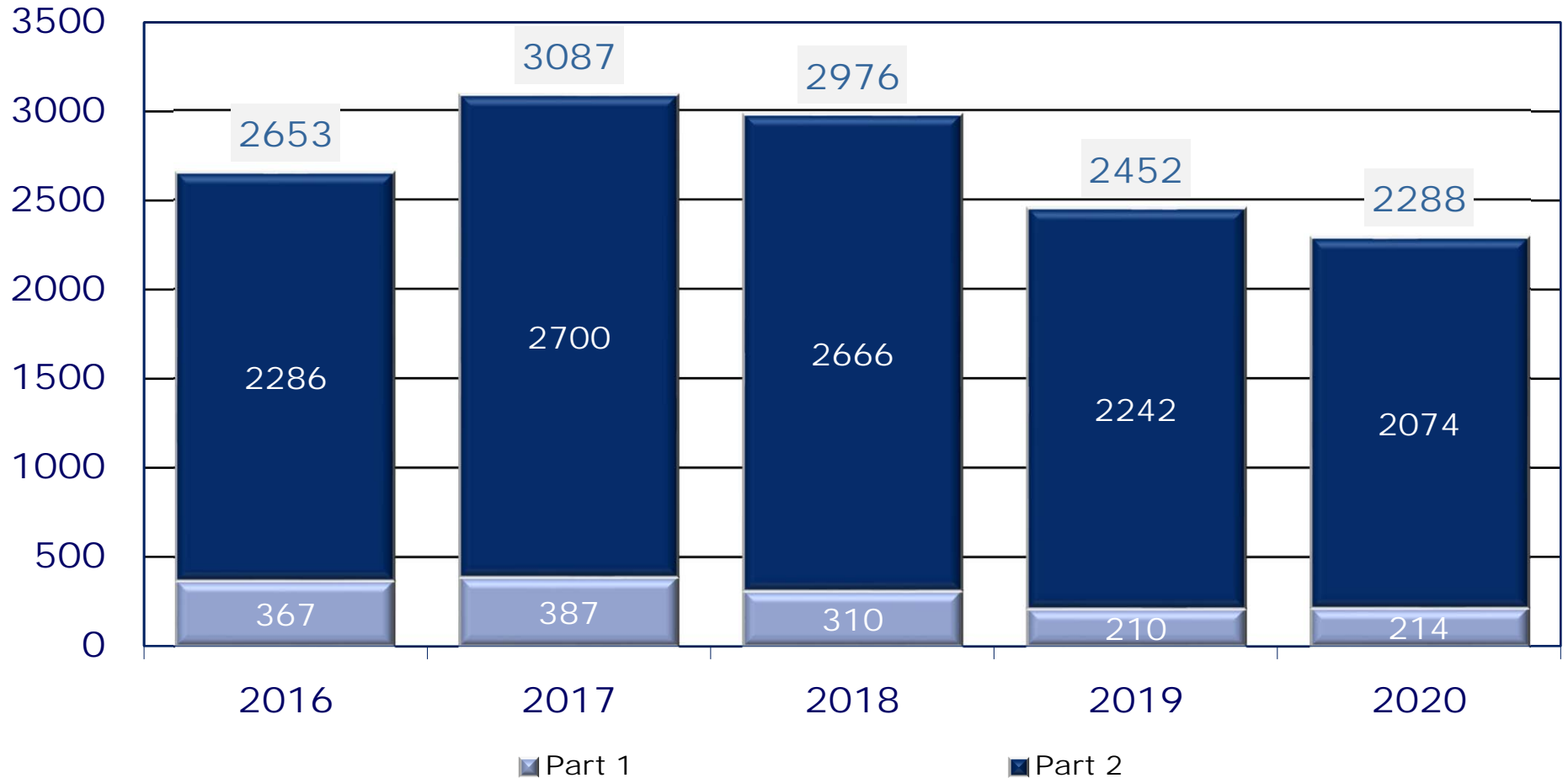
2019 to 2020 increase of 32.26%  
2018 to 2020 decrease of 9.89%  
2017 to 2020 decrease of 14.14%  
2016 to 2020 increase of 2.50%

**Property Crimes include Burglary, Theft, Shoplifting, Arson and Vehicle Theft.**

**Person Crimes include Homicide, Assault, Rape, and Robbery.**



# Part 1 & 2 Crime Arrests by Year



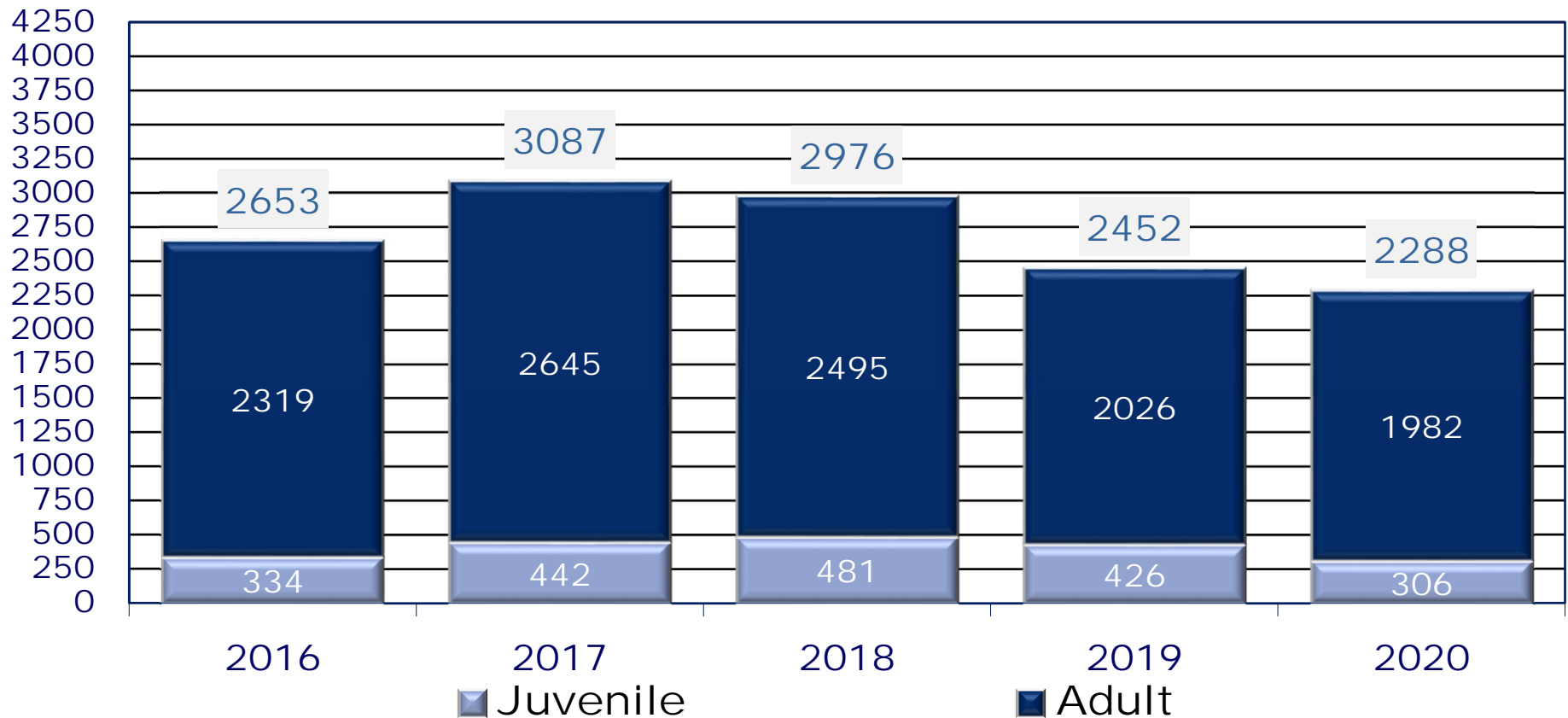
The 2020 statistics are preliminary counts of the original police incident reports and may vary from the final UCR (Uniform Crime Reporting) statistics published by the FBI.





# Arrests: Adult & Juveniles

## Adult, Juvenile & Total Arrests

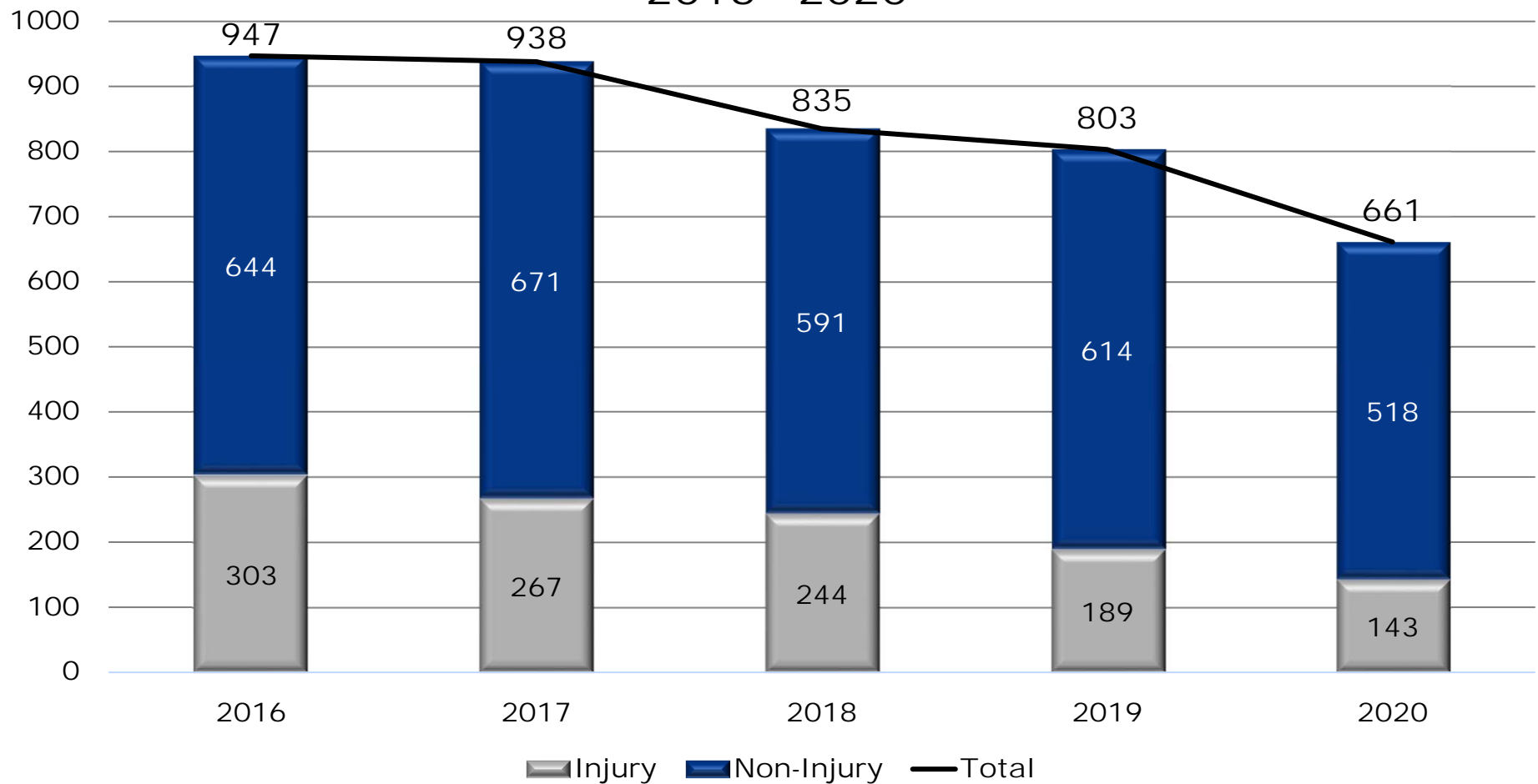


The 2020 statistics are preliminary counts of the original police incident reports and may vary from the final UCR (Uniform Crime Reporting) statistics published by the FBI.



# Accidents by Type

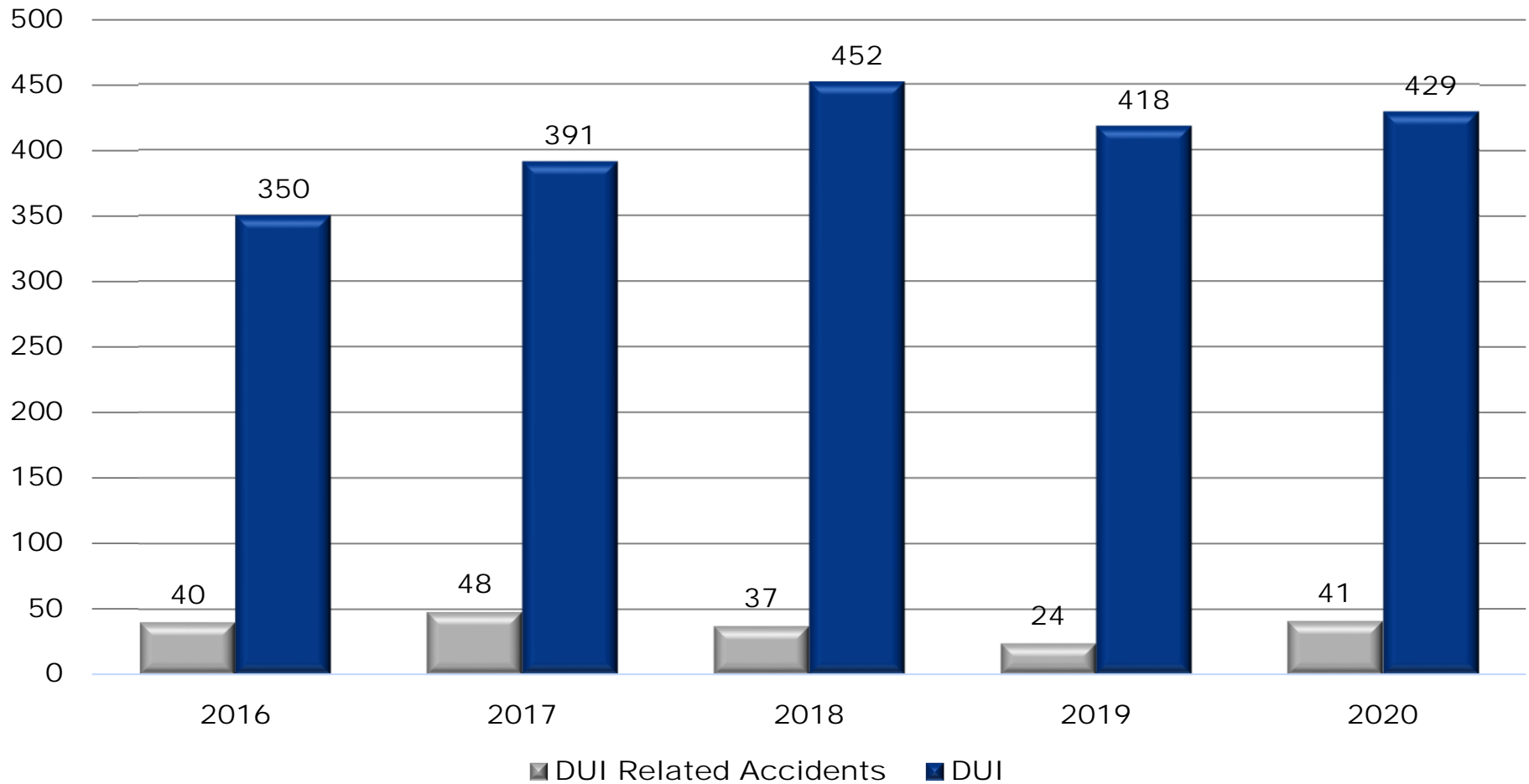
CDA PD Accidents – Injury vs. Non-Injury  
2016 - 2020





# Driving Under the Influence

CDA PD DUIs & DUI Related Accidents  
2016 - 2020





# Coeur d'Alene Police: K9



## ARRESTS (237)

Patrol: 65 / Detection: 172

## DRUGS RECOVERED

Marijuana: 102.8 ounces  
Methamphetamine: 649.9 grams  
Heroin: 158.5 grams  
Cocaine: 28.0 grams

## DEPLOYMENTS (441)

Narcotics / Para found: 375



# Community Outreach



## 2020 Children's Hospital Toy Drive

Donated \$21,000 of toys and \$13,800 (includes cash donations of \$5,000 from Walmart and \$2,500 from Les Schwab) to Sacred Heart Children's Hospital & Kootenai Health



# Victim's Advocate



COEUR D'ALENE POLICE



Victim Advocate Service Unit

*Supporting Victims of  
Domestic Violence,  
Sexual Assault, Stalking and  
Sexual Abuse of Children*

VICTIM SERVICES (208) 769-2220 ext. 856  
victimservices@cdaid.org

EMERGENCY: 911  
NON-EMERGENCY: (208) 769-2320

POLICE TIPS: (208) 769-2296 or  
policetips@cdaid.org

- The Coeur d'Alene Police Victim's Advocate Service Unit was established in 2018 through Grant Funds
- This program provides Victim Services for:
  - On Scene Response for Traumatic Events
  - Assistance and Referrals to Victims of Domestic and Sexual Violence
- In 2020, the Victim's Advocate Assisted:
  - 470 initial contacts with victims and resources as well as 403 follow-up contacts.
  - These contacts involved:
    - 43 Children
    - 830 Adults



# Crime Prevention

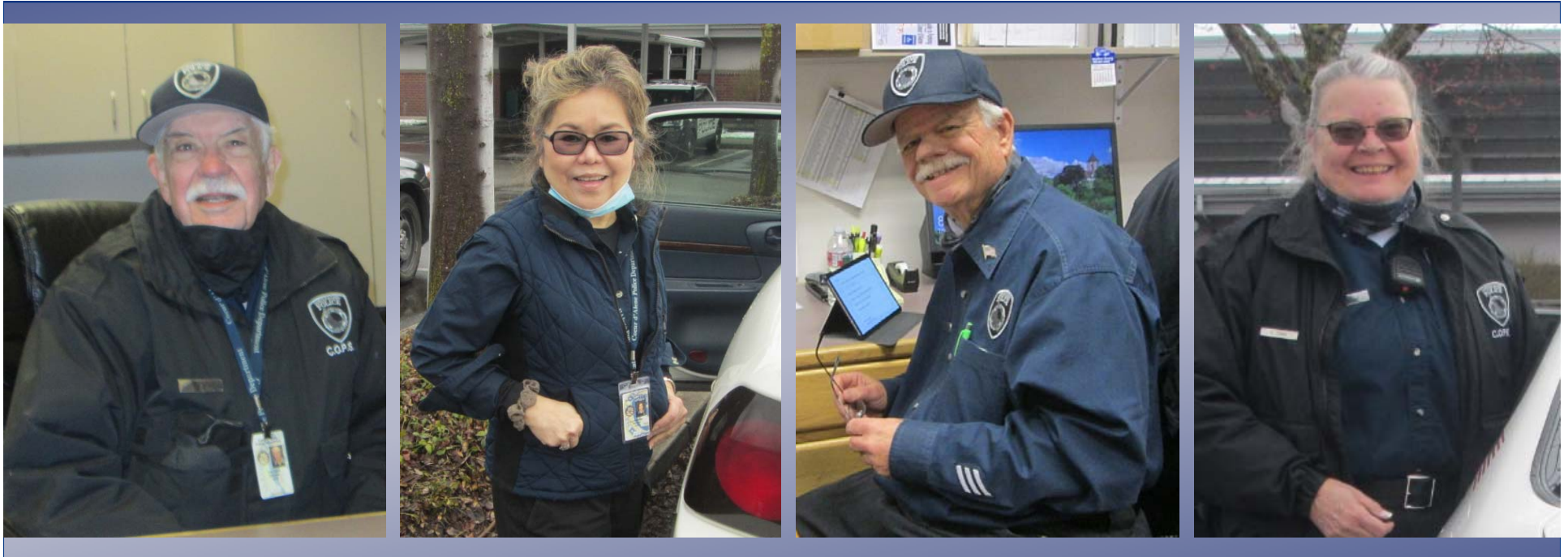


The Coeur d'Alene Police Crime Prevention Program provides Assistance and Service to the Community through:

- Community Events / Sharing Crime Prevention Tips & Strategies
- Special Programs like the Coffee with a COP Program
- Meetings and one-on-one interactions with Local Businesses and the Community to Discuss Community Concerns and Ways to Work Together to Reduce Crime such as:
  - Crime Prevention Through Environmental Design
  - Establishing Crime Free Programs at Apartment Complexes



# Volunteers & Explorers



## 2020 Volunteer Program

14 Active Volunteers with 1203 hours of service in 2020  
Activities included Parking Enforcement & Neighborhood Patrols

## 2020 Explorer Program

Toy Drives / Deliveries: 95 hours  
Holidays & Heroes: 7 hours