

Coeur d'Alene Police



2017 Annual Report



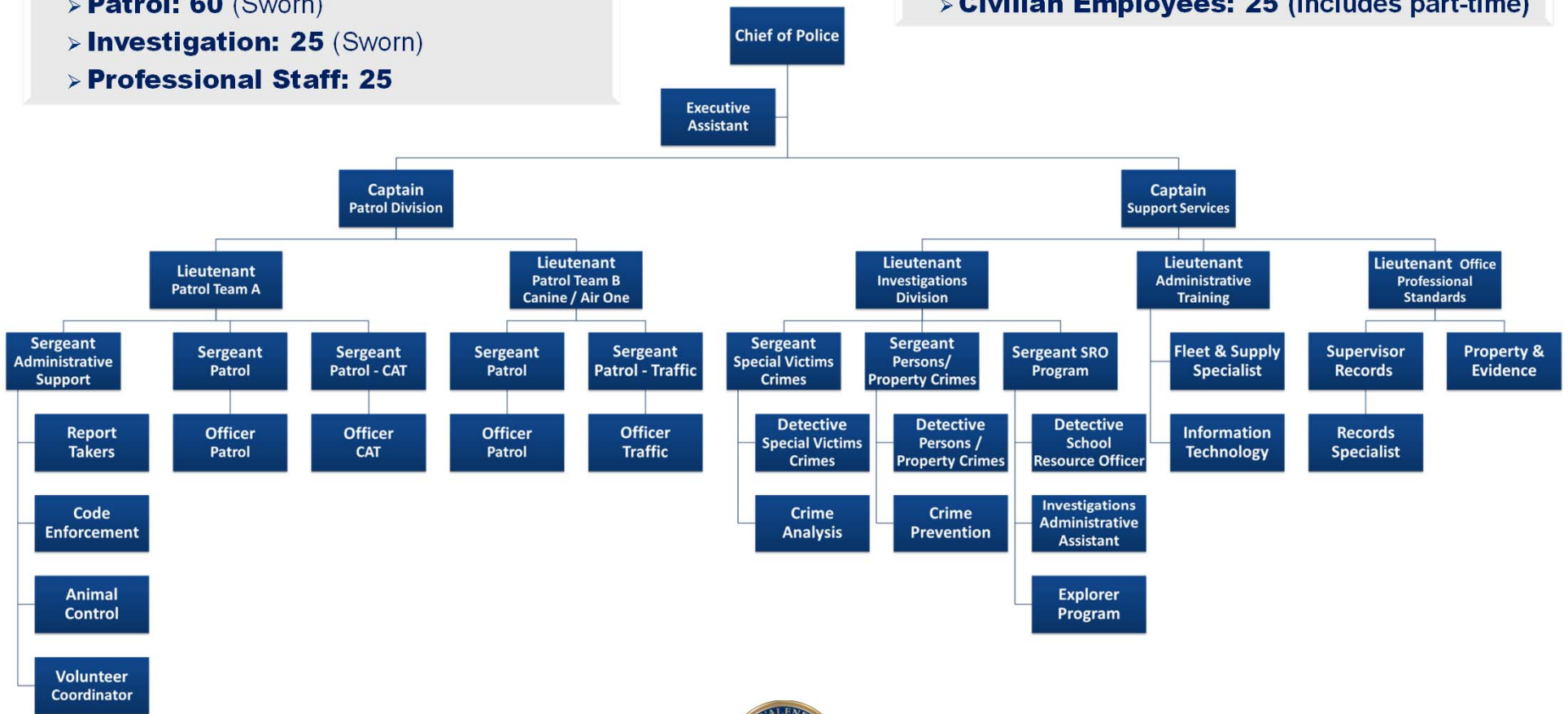
Coeur d'Alene PD: Personnel

Employees Per Department:

- **Administration: 3** (Sworn)
- **Patrol: 60** (Sworn)
- **Investigation: 25** (Sworn)
- **Professional Staff: 25**

Coeur d'Alene Police Total Employees: 113

- **Sworn Officers: 88**
- **Civilian Employees: 25** (includes part-time)



Coeur d'Alene Police

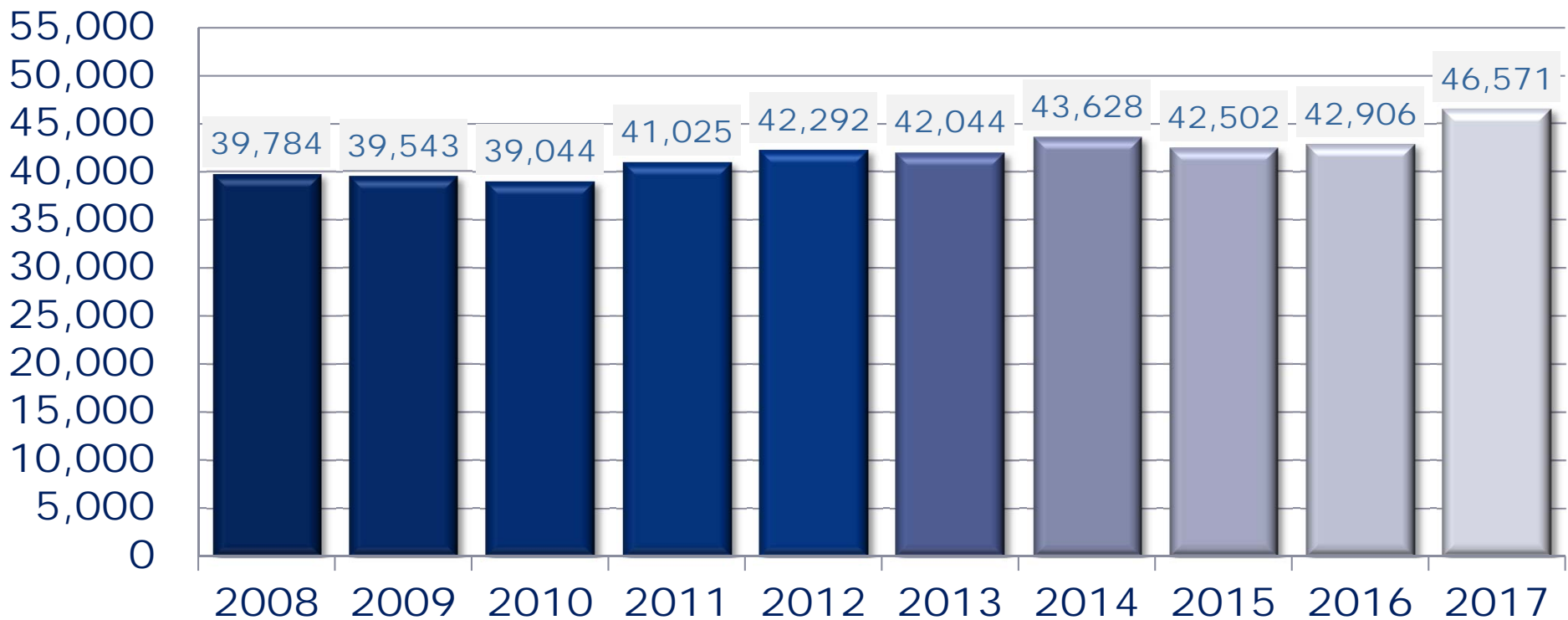


Organizational Chart



CALLS FOR SERVICE TRENDS

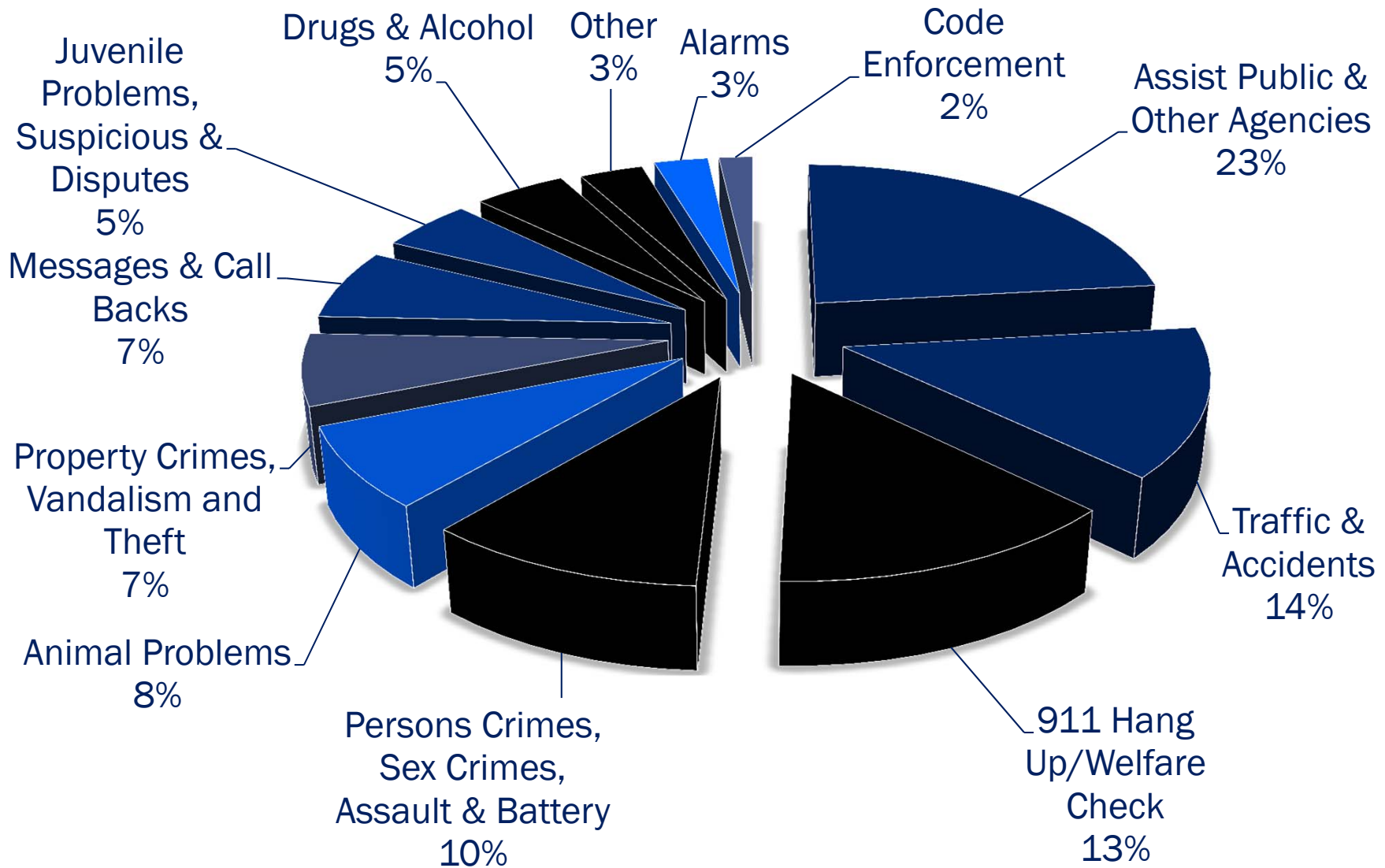
Calls for Service: 2008 - 2017



TOTAL CALLS INCREASED 17% IN PAST TEN YEARS



CALLS FOR SERVICE





PART 1 CRIME by Crime Type

Coeur d'Alene Police: Part 1 Crimes

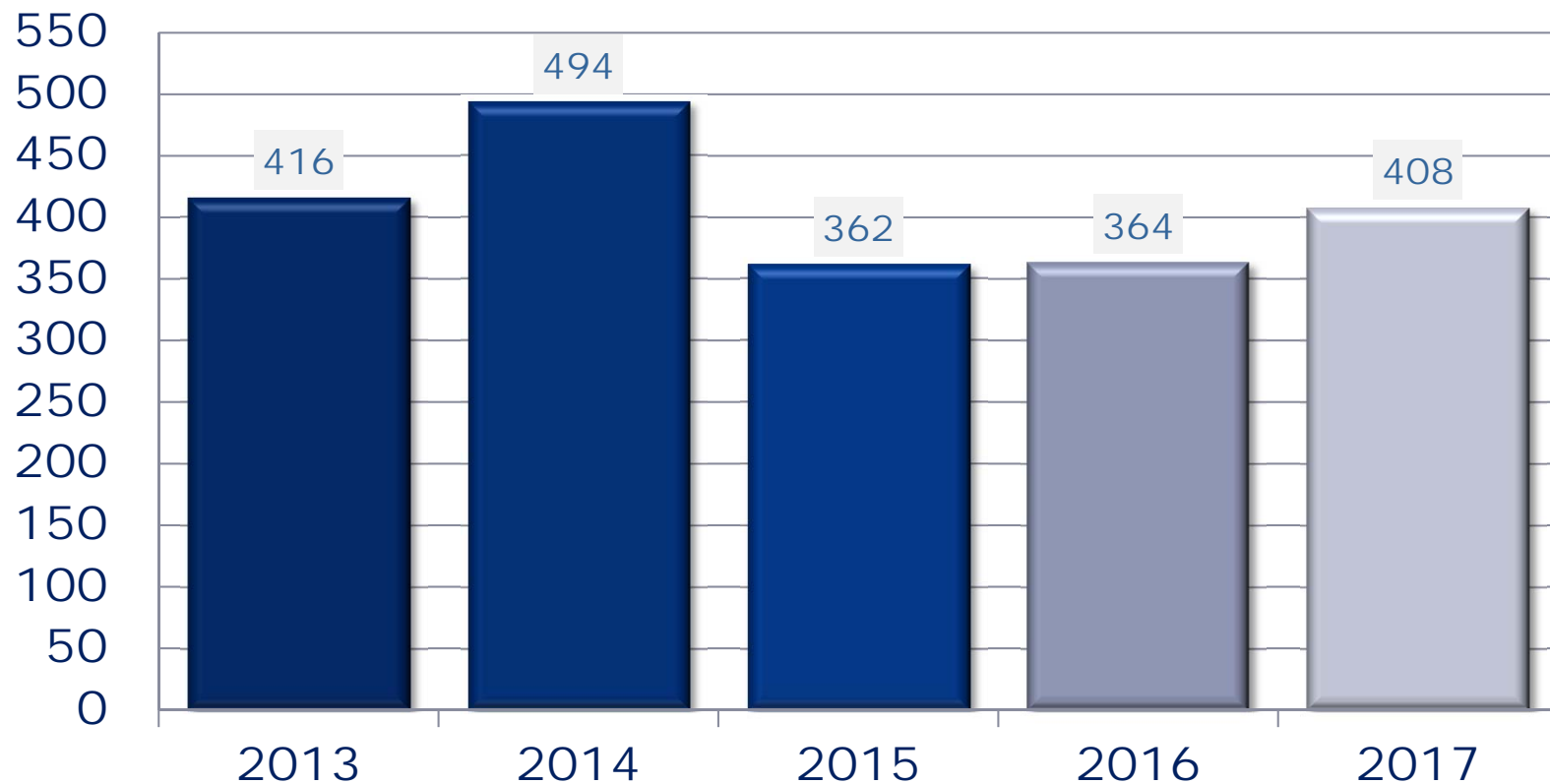
CRIME	2013	2014	2013 to 2014 % of Change	2015	2014 to 2015 % of Change	2016	2015 to 2016 % of Change	2017	2016 to 2017 % of Change
Aggravated Assault	164	152	-7%	127	-16%	98	-23%	125	28%
Arson	8	23	188%	32	39%	18	-44%	18	0%
Auto Burglary	401	413	3%	319	-23%	384	20%	224	-42%
Burglary - Non Residential	82	54	-34%	62	15%	46	-26%	33	-28%
Burglary - Residential	277	284	3%	175	-38%	155	-11%	141	-9%
Rape	53	33	-38%	43	30%	43	0%	45	5%
Homicide	0	1	N/C	1	0%	1	0%	4	300%
Robbery - Commercial	6	1	-83%	4	300%	2	-50%	3	50%
Robbery - Person	14	19	36%	18	-5%	11	-39%	8	-27%
Theft	895	973	9%	780	-20%	768	-2%	681	-11%
Vehicle Theft	114	137	20%	95	-31%	94	-1%	59	-37%
Part 1 Crimes Total	2014	2090	3.77%	1656	-20.77%	1620	-2.17%	1341	-17.22%

Total Part 1 Crime Reduction from 2013 – 2017 is 33.42%



Part 1 Crime Arrests by Year

Part 1 Crime Arrests: 2013-2017

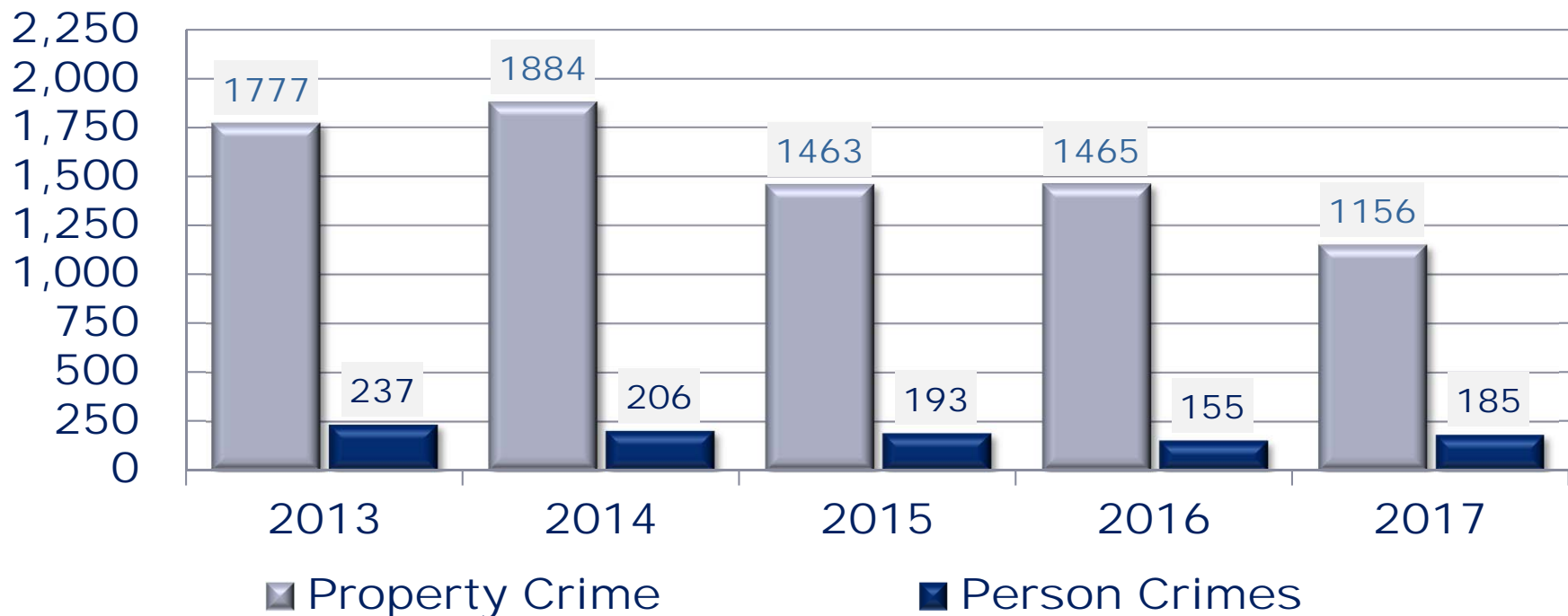


The 2017 statistics are preliminary counts of the original police incident reports and may vary from the final UCR (Uniform Crime Reporting) statistics published by the FBI.



PART 1 CRIME by Crime Group

Property & Person Crimes: 2013 - 2017



**Property Crimes include Burglary, Theft, Shoplifting, Arson and Vehicle Theft.
Person Crimes include Homicide, Assault, Rape, and Robbery.**



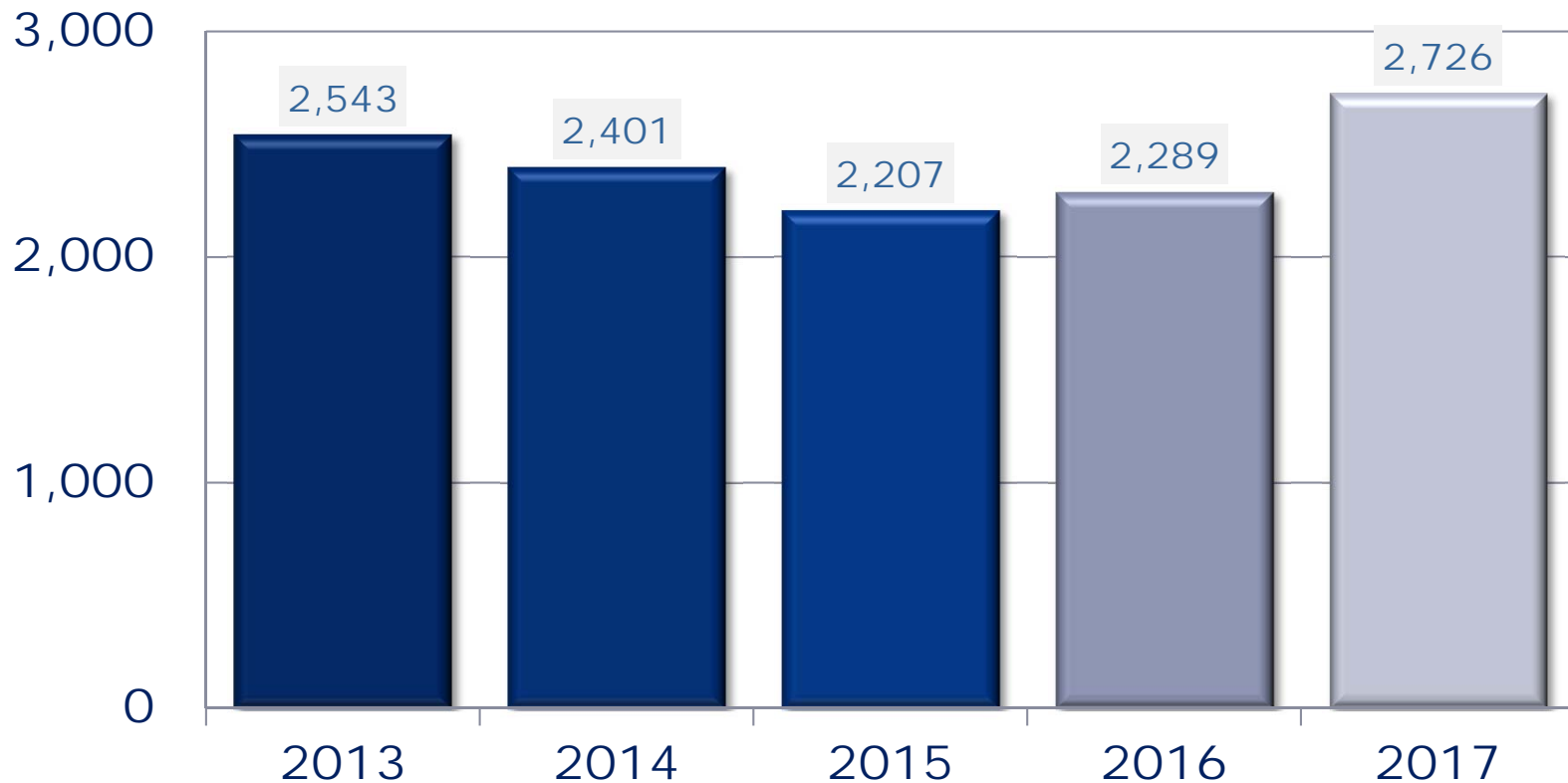
PART 2 CRIME by Crime Type

CRIME	2013	2014	2013 to 2014 % of Change	2015	2014 to 2015 %Change	2016	2015 to 2016 % of Change	2017	2016 to 2017 % of Change
Alcohol Offense	233	189	-19%	169	-11%	133	-21%	144	8%
Assault	677	667	-1%	599	-10%	587	-2%	593	1%
Child Abuse	53	51	-4%	41	-20%	59	44%	42	-29%
Communications Offense	15	15	0%	15	0%	16	7%	11	-31%
Conspiracy	2	4	100%	11	175%	10	-9%	11	10%
CPOR/NCOV Violations	116	154	33%	116	-25%	116	0%	144	24%
Custodial Interference	34	43	26%	42	-2%	34	-19%	26	-24%
Disturbing the Peace	59	42	-29%	36	-14%	28	-22%	45	61%
Drugs	873	756	-13%	967	28%	982	2%	1128	15%
DUI	280	302	8%	357	18%	353	-1%	388	10%
Embezzlement	17	16	-6%	11	-31%	20	82%	16	-20%
False Info to LE	43	50	16%	30	-40%	38	27%	44	16%
Fraud/Forgery	183	191	4%	219	15%	159	-27%	188	18%
Harassment	48	61	27%	45	-26%	26	-42%	51	96%
Intimidation	56	47	-16%	51	9%	36	-29%	47	31%
Juvenile Problem	198	201	2%	134	-33%	105	-22%	103	-2%
Kidnapping	14	12	-14%	9	-25%	9	0%	4	-56%
Mail Tampering	7	29	314%	17	-41%	37	118%	35	-5%
Neglect (Elderly)	24	14	-42%	9	-36%	13	44%	12	-8%
Obstructing	115	119	3%	103	-13%	116	13%	145	25%
Pornography	9	11	22%	11	0%	14	27%	10	-29%
Recovered Stolen Property	42	41	-2%	37	-10%	51	38%	48	-6%
Sex Offender Violation	1	2	100%	3	50%	6	100%	13	117%
Sex Offense	42	62	48%	48	-23%	49	2%	55	12%
Trespassing	35	41	17%	39	-5%	36	-8%	67	86%
Vandalism	479	386	-19%	283	-27%	348	23%	329	-5%
Weapon Offense	51	44	-14%	37	-16%	31	-16%	29	-6%
Other	75	84	12%	75	-11%	46	-39%	49	7%
Part 2 Crimes Total	3781	3634	-3.89%	3514	-3.30%	3458	-1.59%	3777	9.22%



Part 2 Crime Arrests by Year

Part 2 Crime Arrests: 2013-2017

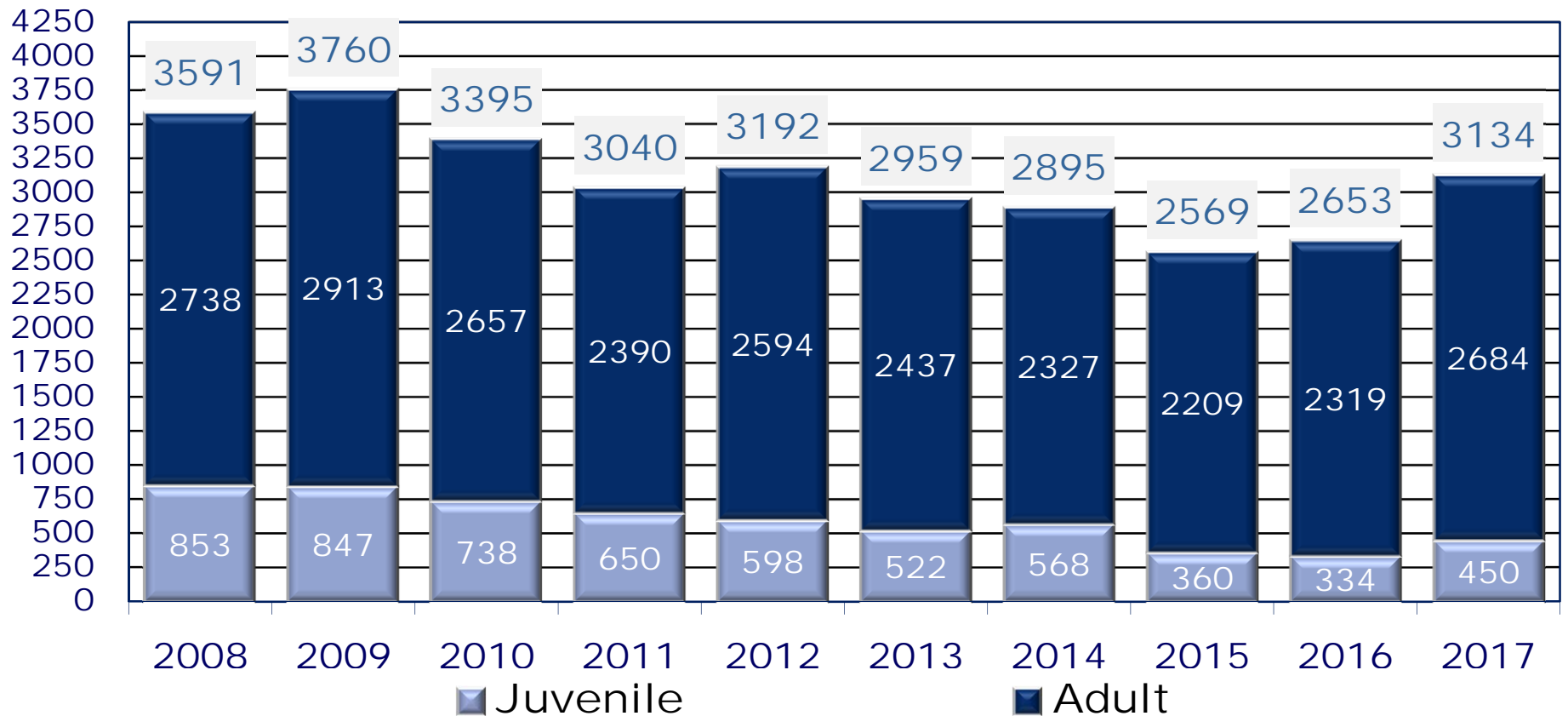


The 2017 statistics are preliminary counts of the original police incident reports and may vary from the final UCR (Uniform Crime Reporting) statistics published by the FBI.



Arrests: Adult & Juveniles

Adult, Juvenile & Total Arrests

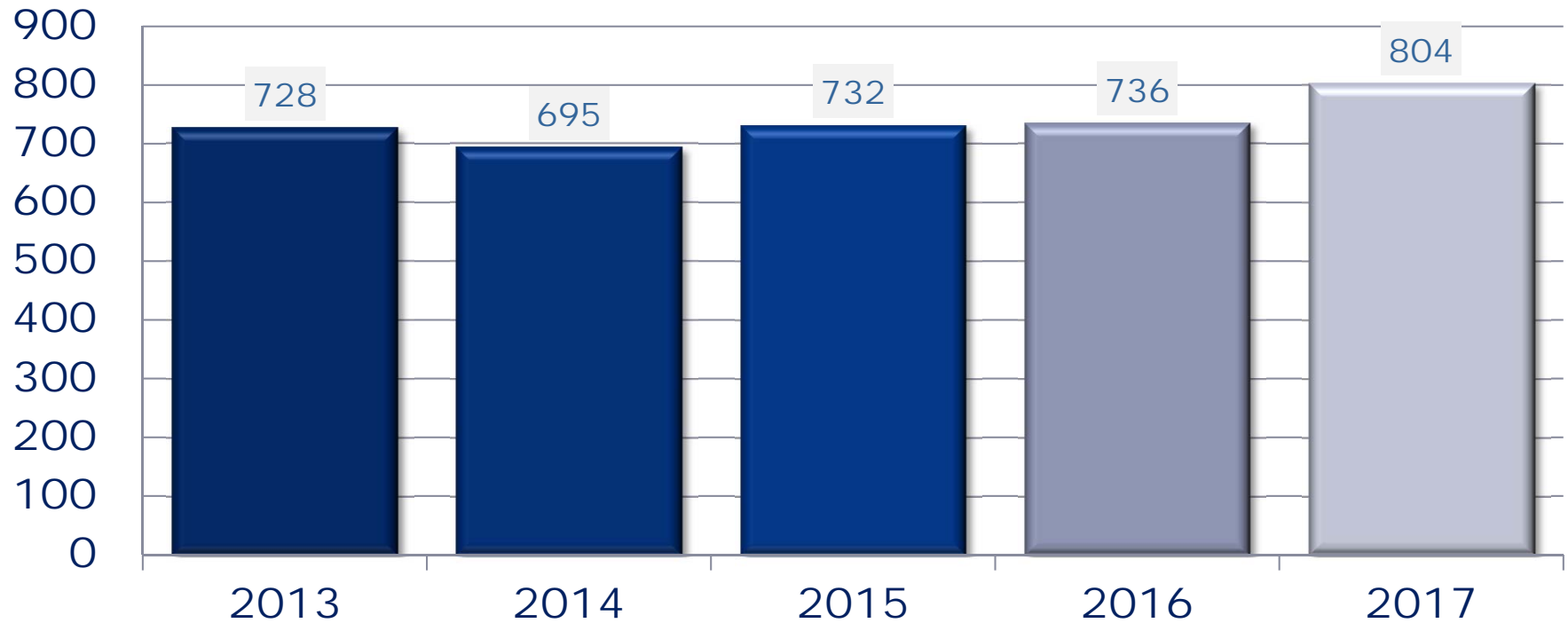


The 2017 statistics are preliminary counts of the original police incident reports and may vary from the final UCR (Uniform Crime Reporting) statistics published by the FBI.



Warrant Arrests

Warrant Arrests 2013 to 2017 Felony & Misdemeanor





Accidents by Type & DUI

Accidents & Driving Under the Influence (DUI)

	2013	2014	2015	2016	2017
Reportable Accidents	897	945	827	947	938
Injury Accidents	306	305	270	303	267
Non-Injury Accidents	591	640	557	644	671
US-95 Related Accidents	157	160	136	146	161
DUI Related Accidents	50	59	38	40	48
DUIs	280	302	357	353	388