

# Objectives of Traffic Study Overall

- ⇒ Understand what is causing existing congestion in the Riverstone area (beyond there is a lot of traffic).
- ⇒ Understand the impacts of development on the transportation system.
- ⇒ Understand how alternatives (new street connections, new/improved intersection configuration, change in route choice, etc) can impact/improve the transportation system.
- ⇒ Provide recommendations.



Traffic Study Boundary

## Objectives of This Meeting

- ⇒ Gather public observation of existing conditions (congestion, delay, dangerous conditions, etc)
- ⇒ Gather public observation of route choice.
- ⇒ Use public observation to vet the existing conditions model.

# Timeline for Atlas Waterfront/Riverstone Traffic Study

## Future Model

- . Build a model that depicts conditions with development

## Data Collection

- . Video intersection counts
- . Hand counts
- . Visual observation of operations
- . Regional data
- . Public observations

01



**We are here**

02



05



## Mitigation Analysis

- . Can we alter route choice?
- . What improvements are needed now?
- . What improvements are needed because of development?

03



## Existing Model

- . Build a model that depicts existing conditions as closely as possible

## Origin-Destination Study

- . What routes do drivers currently choose?
- . Does route choice vary by time of day or season?



# What Are Your Observations?

Place letters that correspond to the statements below or make your own.



Ramsey/Appleway



NW BLVD/Ironwood

Northwest BLVD/Lakewood

Atlas Waterfront/  
Riverstone  
Traffic Study



Long  
Delays



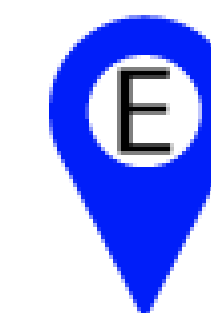
Dangerous



Need Ped/Bike  
Access



Desired Street  
Connection

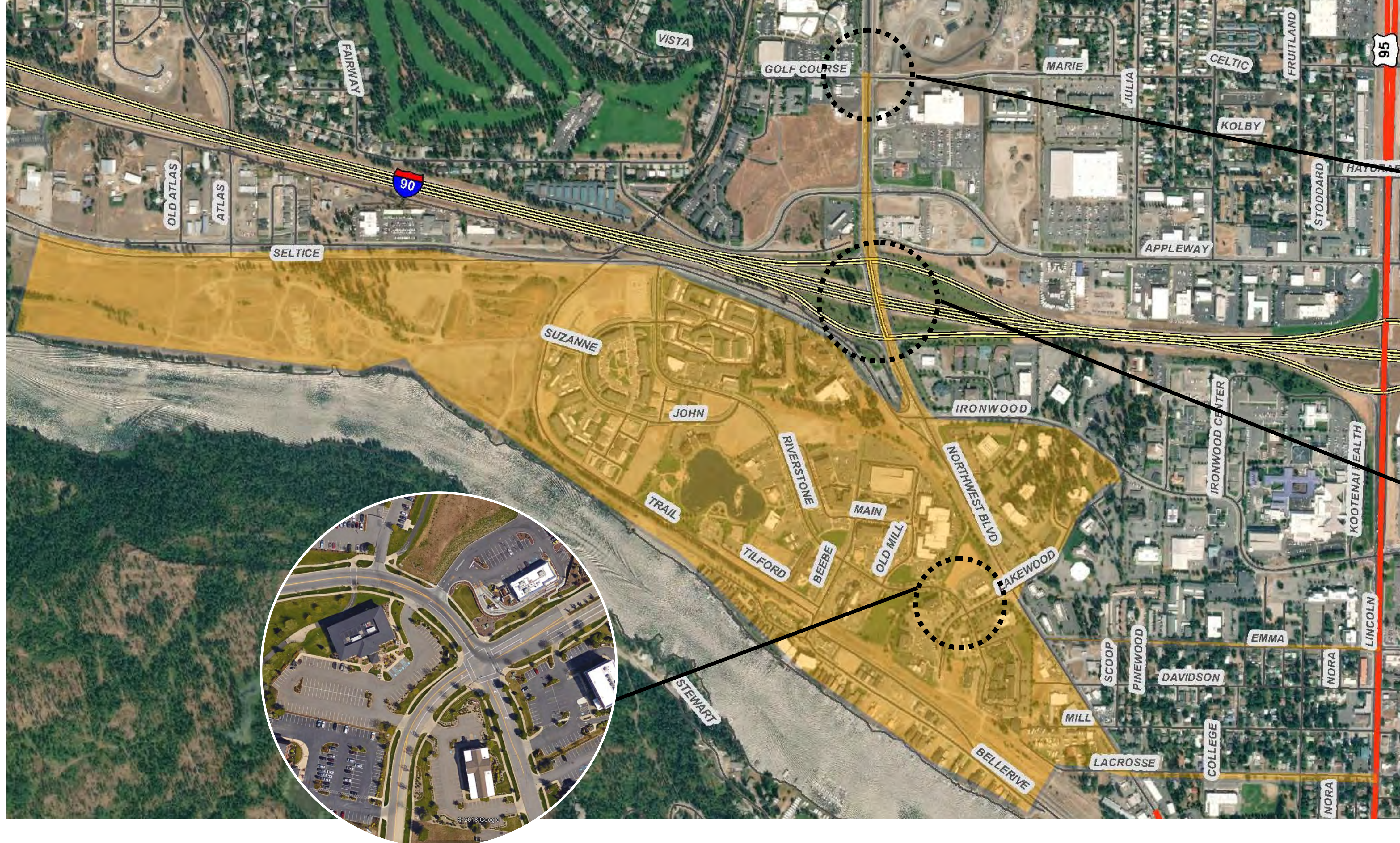


Need Transit  
Stop



# What Are Your Observations?

Place letters that correspond to the statements below or make your own.



Ramsey/Golf Course Rd



NW BLVD/I-90



Lakewood/Riverstone

Atlas Waterfront/  
Riverstone  
Traffic Study



Long  
Delays



Dangerous



Need Ped/Bike  
Access



Desired Street  
Connection



Need Transit  
Stop

